

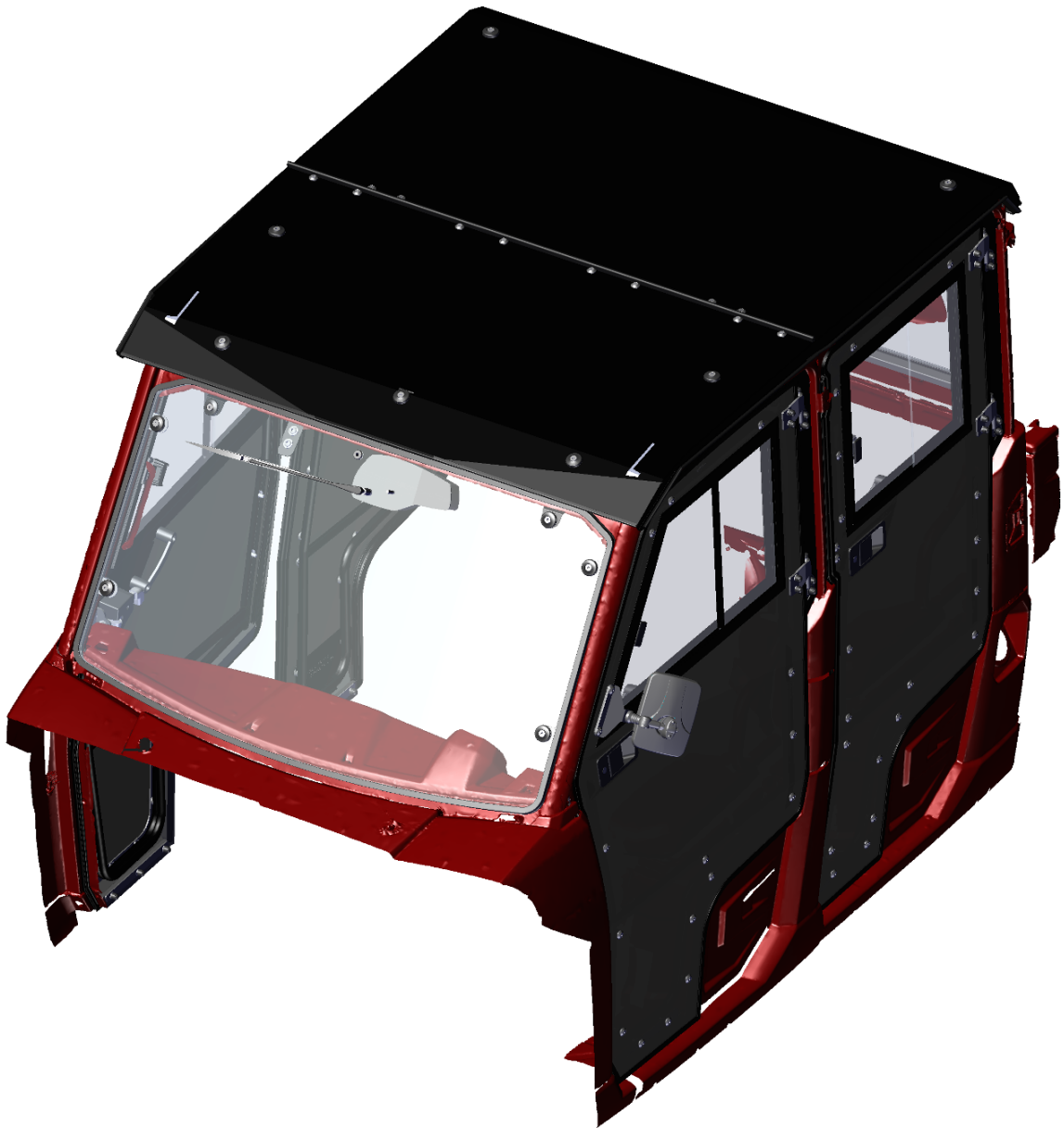


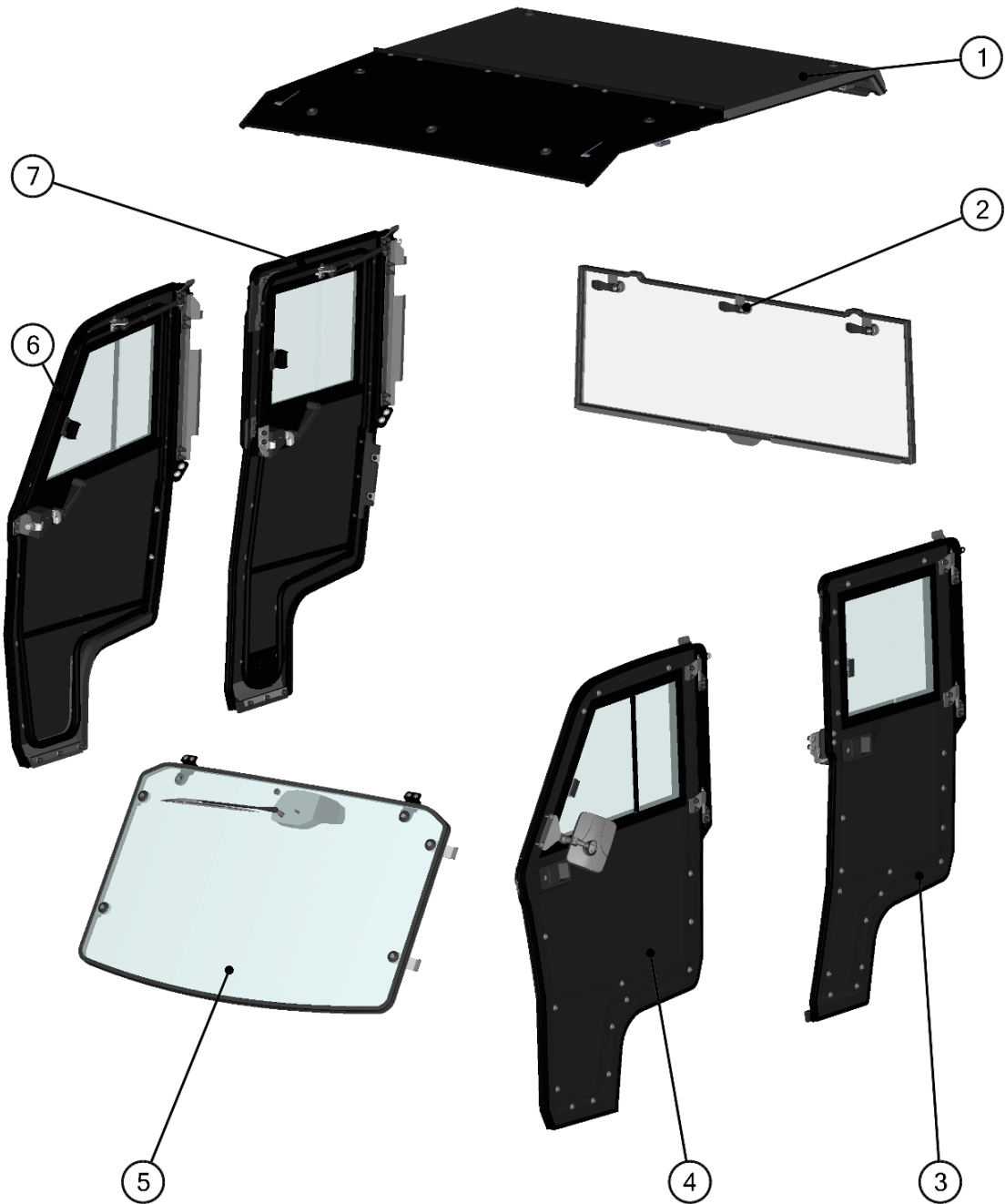
SPARE - PARTS CATALOG

POLARIS

**RANGER XP 900 Crew EFI
PROTECTOR**

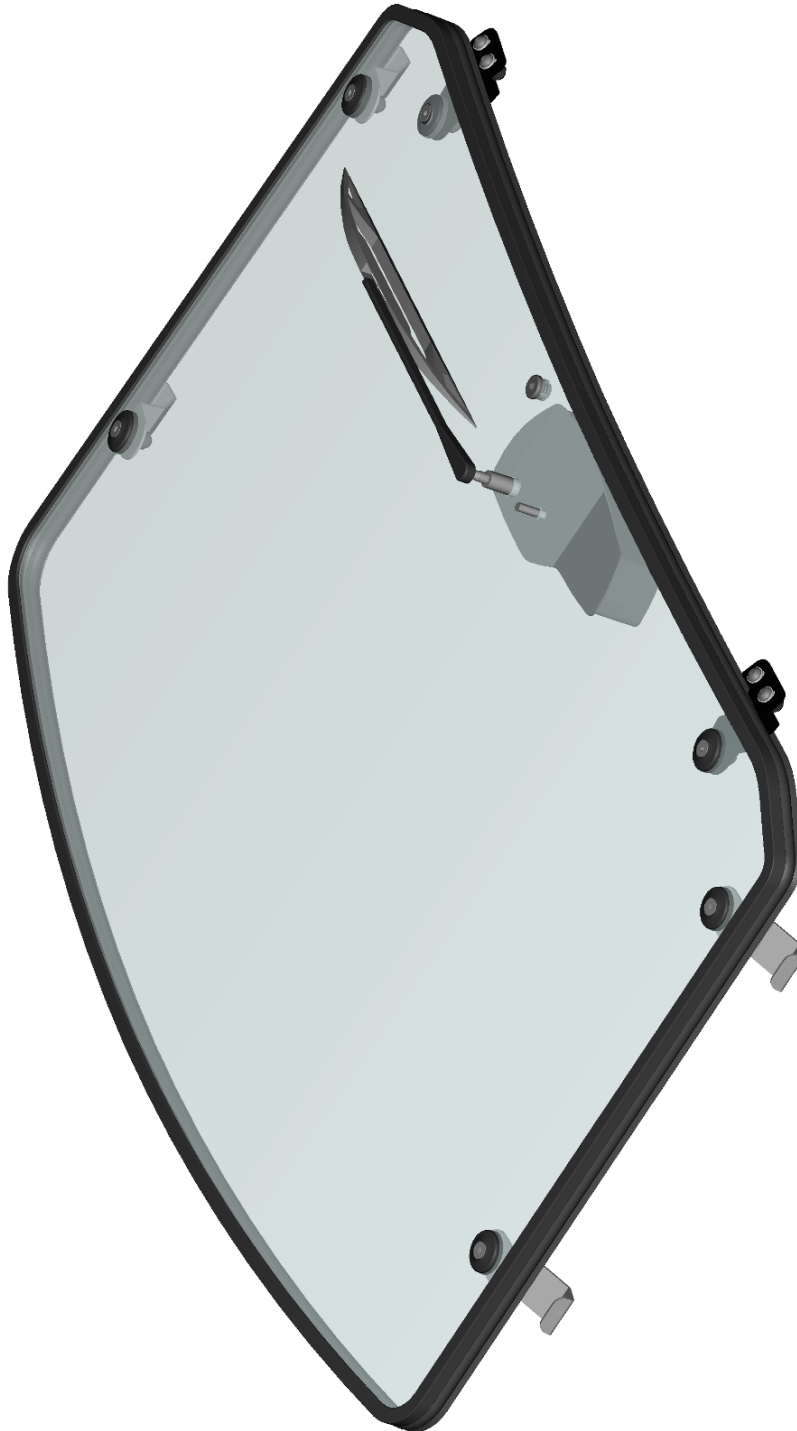
CAB PREVIEW

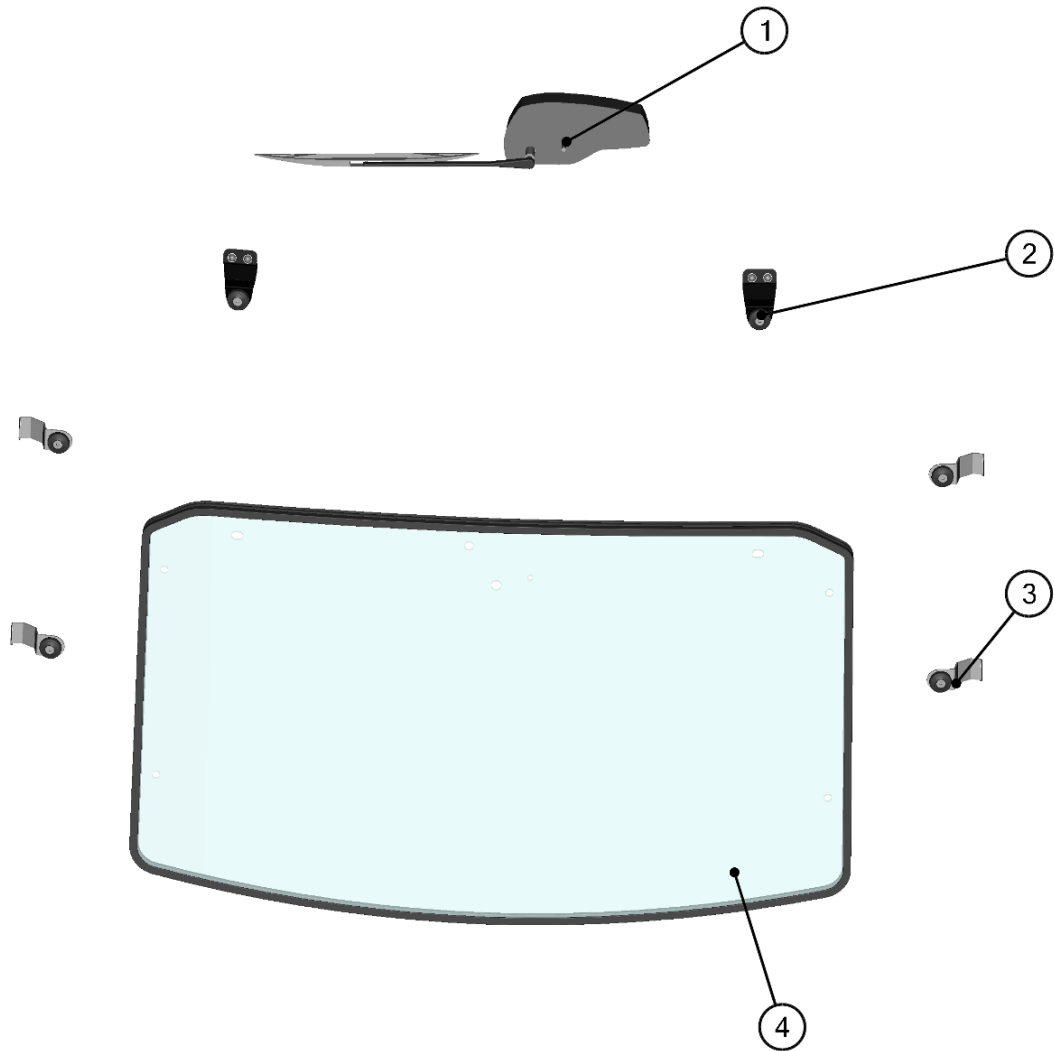




| Id | Catalogue no. | Description | Qty |
|----|---------------|-------------------|-----|
| 1 | 32S12U03S30 | ROOF | 1 |
| 2 | 32S05U01S20 | REAR PANEL | 1 |
| 3 | 32S06R01S40 | LEFT REAR DOOR | 1 |
| 4 | 32S05R01S40 | LEFT FRONT DOOR | 1 |
| 5 | 32S05U02S10 | FRONT PANEL SOLID | 1 |
| 6 | 32S05R01S50 | RIGHT FRONT DOOR | 1 |
| 7 | 32S06R01S50 | RIGHT REAR DOOR | 1 |

FRONT PANEL

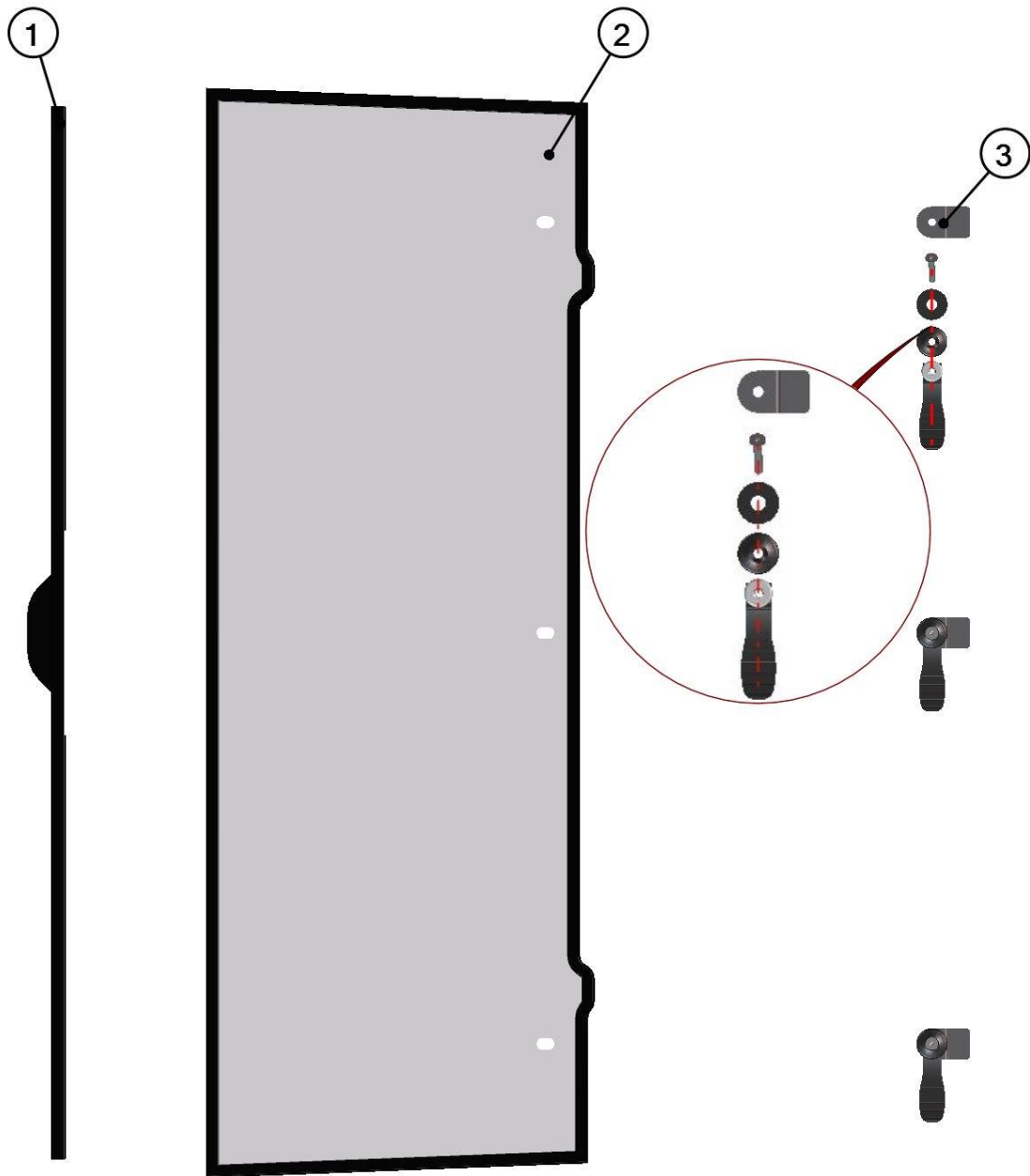




| ID | Catalogue no. | Description | Qty |
|----|-----------------|-----------------------------|-----|
| 1 | 32S05U01-10M004 | FRONT WIPER ASSEMBLY | 1 |
| 2 | 32S05U02-10M004 | FRONT UPPER HOLDER ASSEMBLY | 2 |
| 3 | 32S05U02-10M003 | FRONT SIDE HOLDER ASSEMBLY | 4 |
| 4 | 32S05U02-10M001 | FRONT GLASS WITH SEALING | 1 |

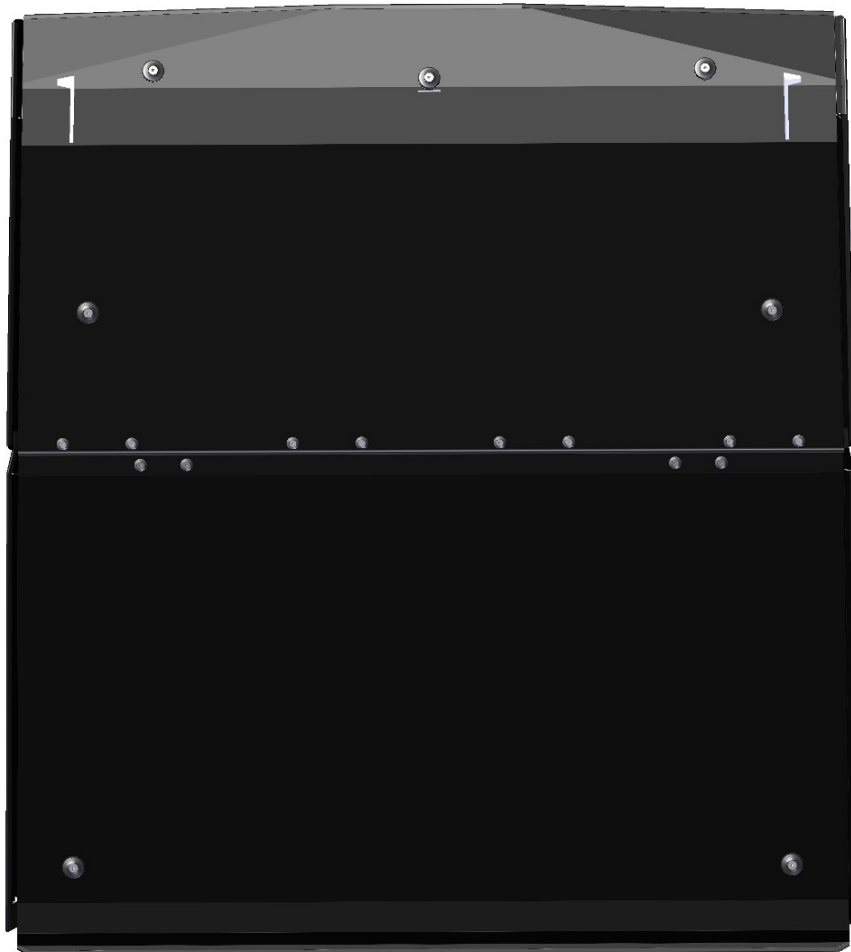
REAR PANEL

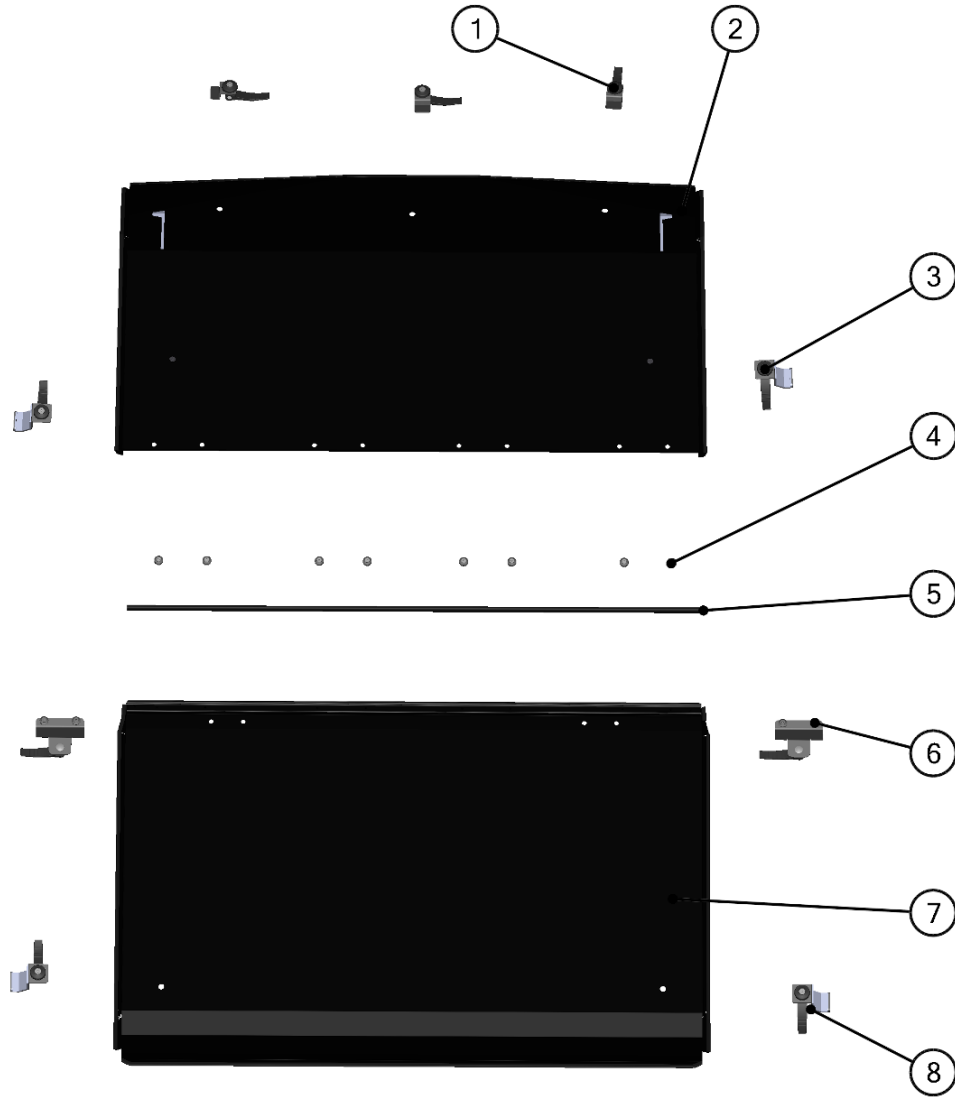




| Id | Catalogue no. | Description | Qty |
|----|-----------------|-------------------------|-----|
| 1 | 32S05U01-20W001 | REAR BOTTOM LEDGE | 1 |
| 2 | 32S05U01-20M001 | REAR GLASS WITH SEALING | 1 |
| 3 | 32S05U01-20M003 | REAR FIXING ASSEMBLY | 3 |

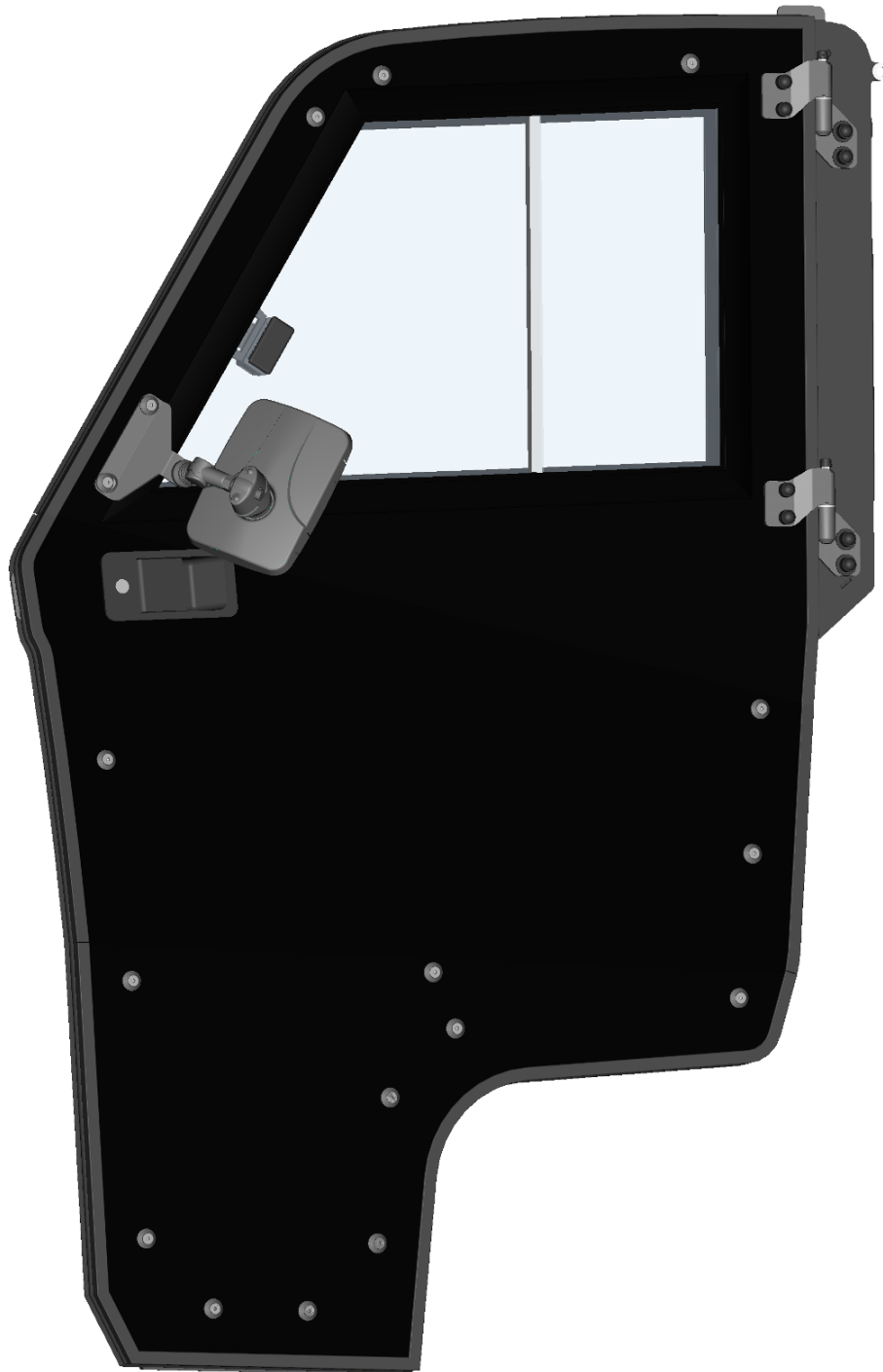
ROOF

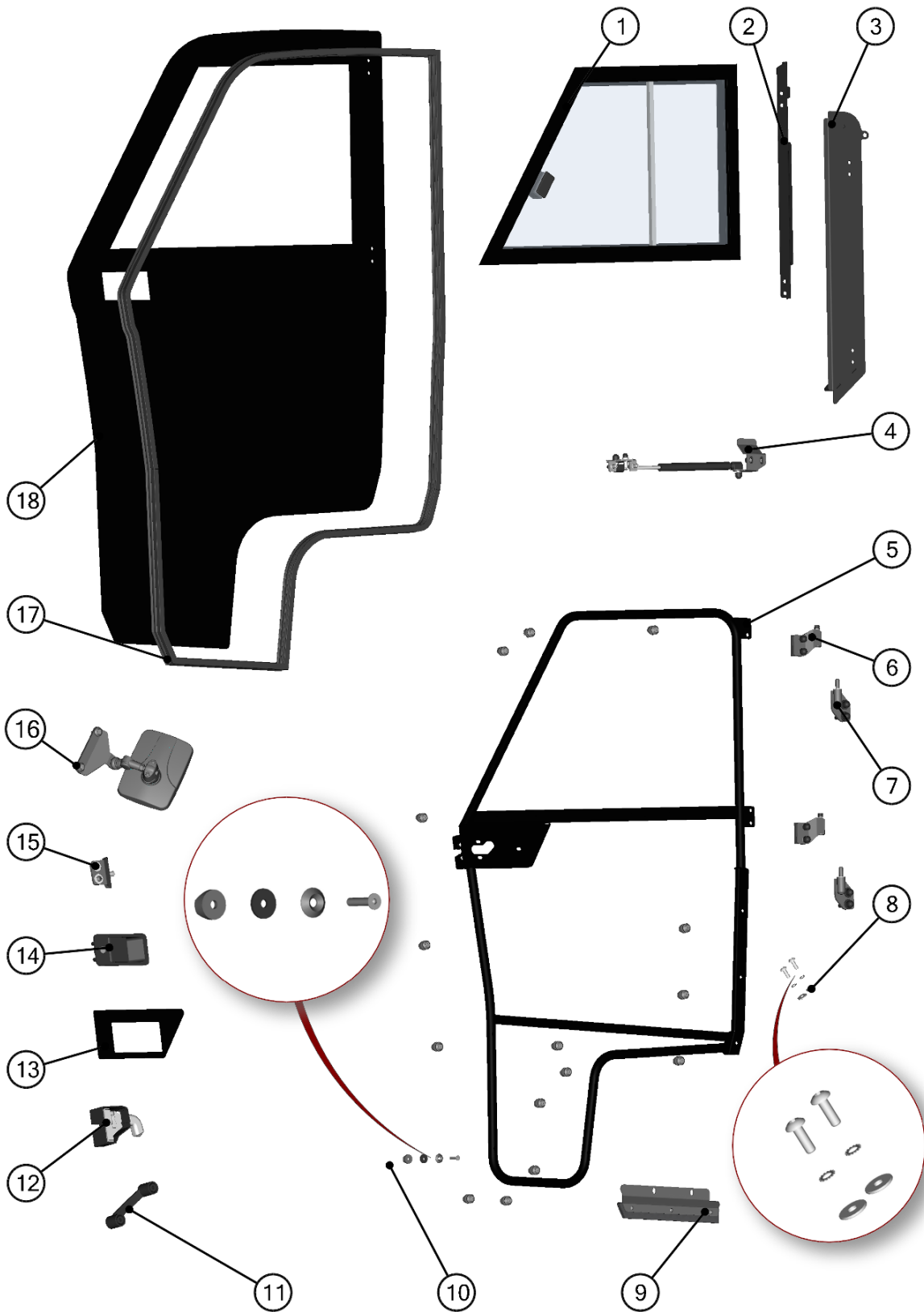




| Id | Catalogue no. | Description | Qty |
|----|--------------------|-------------------------|-----|
| 1 | 32S12U03-30M008 | FRONT ROOF FRONT HOLDER | 3 |
| 2 | 32S12U03-30M001 | FRONT ROOF ASSEMBLY | 1 |
| 3 | 32S12U03-30M004 | FRONT ROOF SIDE HOLDER | 2 |
| 4 | 00-00M020 | CENRTAL FIXING ASSEMBLY | 8 |
| 5 | 003627*32S12U03S30 | RUBBER PRIFILE LEMOVKA | 1 |
| 6 | 32S12U03-30M005 | REAR ROOF FRONT HOLDER | 2 |
| 7 | 32S12U03-30M002 | REAR ROOF ASSEMBLY | 1 |
| 8 | 32S12U03-30M004 | REAR ROOF SIDE HOLDER | 2 |

LEFT FRONT DOOR+RIGHT FRONT DOOR





LEFT FRONT DOOR TABLE

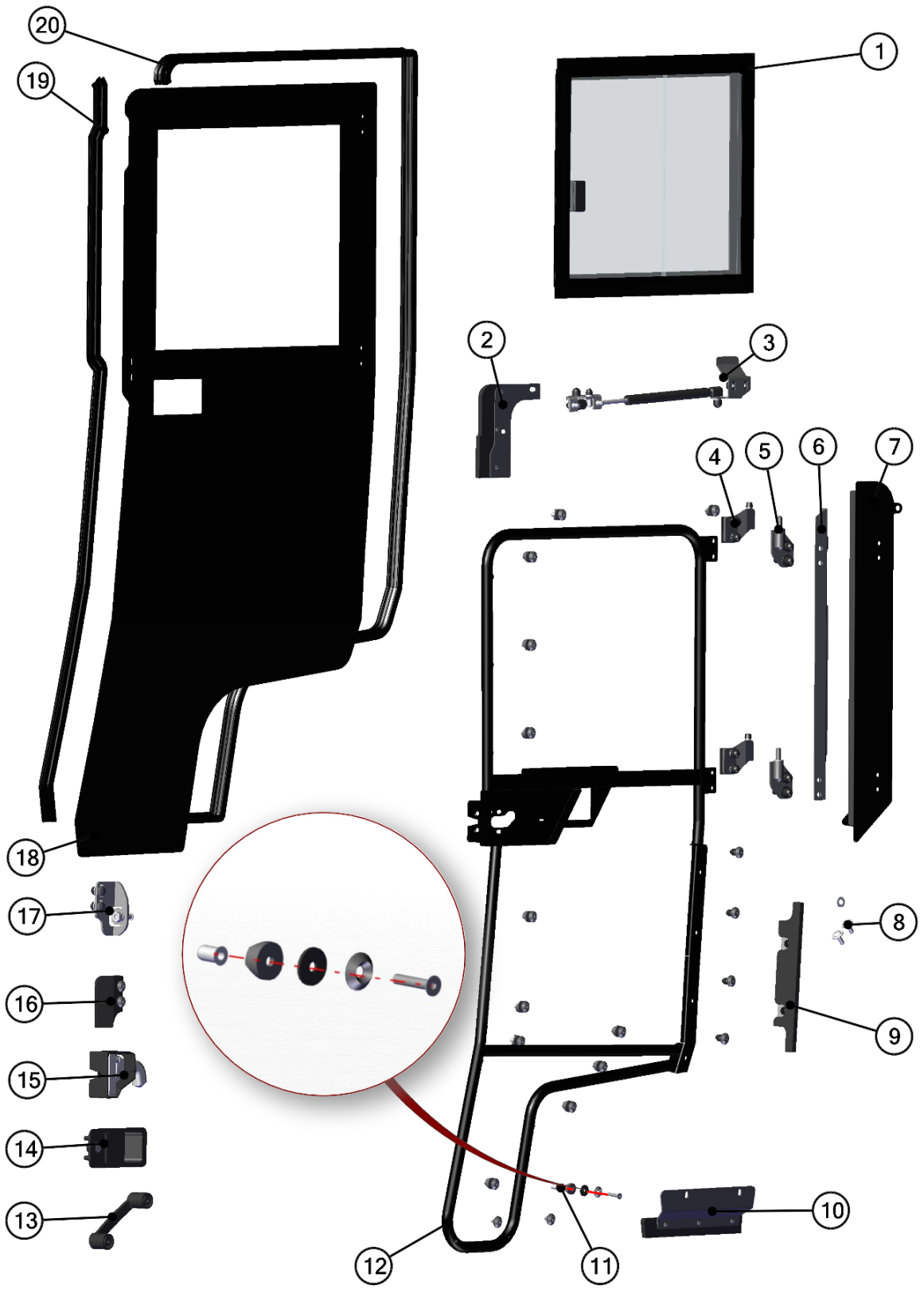
| ID | Catalogue no. | Description | Qty |
|----|--------------------|--------------------------------|-----|
| 1 | 32S05U01-40M001 | LEFT WINDOW ASSEMBLY | 1 |
| 2 | 32S05U01-40-003 | LEFT DOOR BASE LEDGE | 1 |
| 3 | 32S05U01-40W001 | LEFT DOOR BASE WELDED | 1 |
| 4 | 32S05U01-40PKM001 | LEFT GAS SPRING KIT | 1 |
| 5 | 32S05U01-40W002 | LEFT DOOR FRAME WELDED | 1 |
| 6 | 32S05U01-40M004 | LEFT DOOR HINGE ASSEMBLY | 2 |
| 7 | 32S05U01-40M007 | LEFT BASE HINGE ASSEMBLY | 2 |
| 8 | 32S05U01-40M005 | BASE FIXING ASSEMBLY | 1 |
| 9 | 32S05U01-40M006 | LEFT BOTTOM SEALING ASSEMBLY | 1 |
| 10 | 00-00M003 | DOOR FIXING KIT | 16 |
| 11 | 001703 | DOOR HANDLE | 1 |
| 12 | 001743 | LEFT INNER DOOR LOCK | 1 |
| 13 | 32S05U01-40-016 | LOCK WASHER | 1 |
| 14 | 000841 | OUTER DOOR LOCK | 1 |
| 15 | 32S05U01-40M003 | LEFT DOOR STOP ASSEMBLY | 1 |
| 16 | 00-109U-M007 | SIDE MIRROR | 1 |
| 17 | 002454^32S05U01S40 | RUBBER PROFILE "SARAZINE SIDE" | 1 |
| 18 | 32S05R01-40-005 | LEFT DOOR ABS | 1 |

RIGHT FRONT DOOR TABLE

| ID | Catalogue no. | Description | Qty |
|----|--------------------|--------------------------------|-----|
| 1 | 32S05U01-50M001 | RIGHT WINDOW ASSEMBLY | 1 |
| 2 | 32S05U01-50-003 | RIGHT DOOR BASE LEDGE | 1 |
| 3 | 32S05U01-50W001 | RIGHT DOOR BASE WELDED | 1 |
| 4 | 32S05U01-50PKM001 | RIGHT GAS SPRING KIT | 1 |
| 5 | 32S05U01-50W002 | RIGHT DOOR FRAME WELDED | 1 |
| 6 | 32S05U01-50M004 | RIGHT DOOR HINGE ASSEMBLY | 2 |
| 7 | 32S05U01-50M007 | RIGHT BASE HINGE ASSEMBLY | 2 |
| 8 | 32S05U01-40M005 | BASE FIXING ASSEMBLY | 1 |
| 9 | 32S05U01-50M006 | RIGHT BOTTOM SEALING ASSEMBLY | 1 |
| 10 | 00-00M003 | DOOR FIXING KIT | 16 |
| 11 | 001703 | DOOR HANDLE | 1 |
| 12 | 001744 | RIGHT INNER DOOR LOCK | 1 |
| 13 | 32S05U01-40-016 | LOCK WASHER | 1 |
| 14 | 000841 | OUTER DOOR LOCK | 1 |
| 15 | 32S05U01-50M003 | RIGHT DOOR STOP ASSEMBLY | 1 |
| 16 | 00-109U-M007 | SIDE MIRROR | 1 |
| 17 | 002454^32S05U01S40 | RUBBER PROFILE "SARAZINE SIDE" | 1 |
| 18 | 32S05R01-50-005 | RIGHT DOOR ABS | 1 |

LEFT REAR DOOR+RIGHT REAR DOOR





LEFT REAR DOOR TABLE

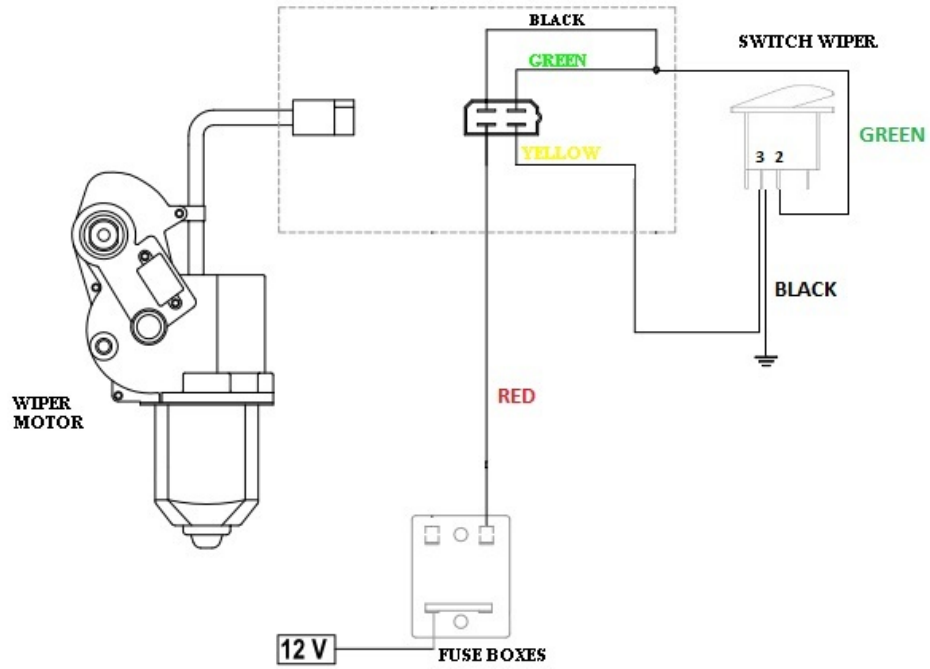
| Id | Catalogue no. | Description | Qty |
|----|--------------------|---------------------------------------|-----|
| 1 | 32S06U01-40M002 | LEFT REAR WINDOW ASSEMBLY | 1 |
| 2 | 32S06U01-40M006 | LEFT REAR DOOR UPPER SEALING ASSEMBLY | 1 |
| 3 | 32S05U01-40PKM001 | LEFT GAS SPRING ASSEMBLY | 1 |
| 4 | 32S05U01-40M004 | LEFT REAR DOOR HINGE ASSEMBLY | 2 |
| 5 | 32S05U01-40M007 | LEFT REAR BASE HINGE | 2 |
| 6 | 32S05U01-40-003 | DOOR BASE LEDGE | 1 |
| 7 | 32S05U01-40W001 | REAR DOOR BASE WELDED | 1 |
| 8 | 32S05U01-40M005 | DOOR BASE FIXING ASSEMBLY | 1 |
| 9 | 32S06U01-40M004 | LEFT REAR DOOR SEALING ASSEMBLY | 1 |
| 10 | 32S06U01-40M001 | LEFT REAR BOTTOM SEALING ASSEMBLY | 1 |
| 11 | 00-00M003 | POLYCARBONATE FIXING ASSEMBLY | 13 |
| 12 | 32S06U01-40W001 | LEFT DOOR FRAME WELDED | 1 |
| 13 | 001703 | DOOR HANDLE | 1 |
| 14 | 000841 | OUTER DOOR LOCK | 1 |
| 15 | 001743 | LEFT INNER DOOR LOCK | 1 |
| 16 | 32S06U01-40M005 | LEFT REAR DOOR EPDM ASSEMBLY | 1 |
| 17 | 32S06U01-40M003 | LEFT REAR DOOR STOP ASSEMBLY | 1 |
| 18 | 32S06R01-40-001 | LEFT REAR DOOR ABS | 1 |
| 19 | 002658^32S06U01S40 | RUBBER PROFILE "PIRELA STRAIGHT" | 1 |
| 20 | 002454^32S06U01S40 | RUBBER PROFILE "SARAZIN SIDE" | 1 |

RIGHT REAR DOOR TABLE

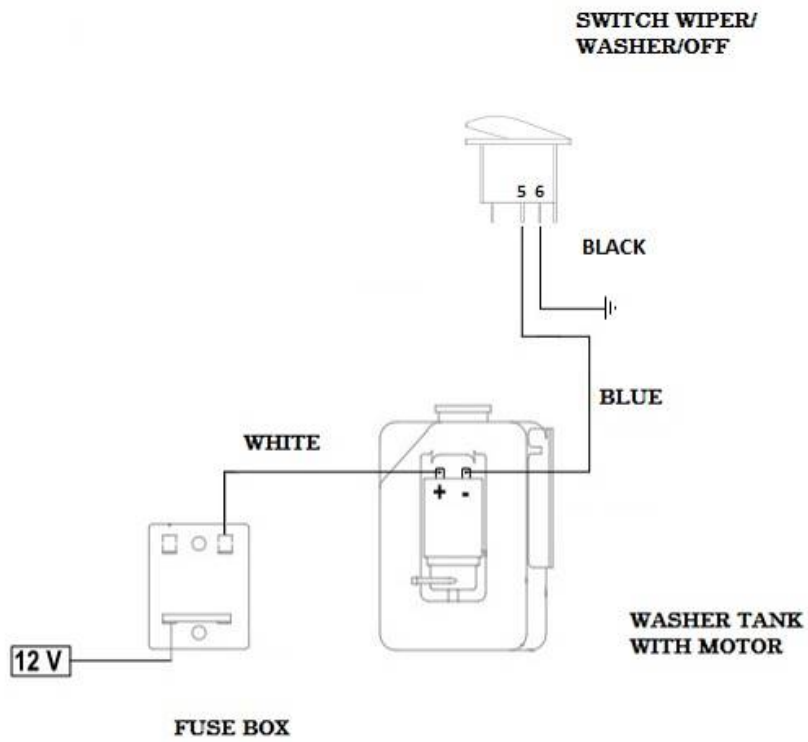
| Id | Catalogue no. | Description | Qty |
|----|--------------------|--|-----|
| 1 | 32S06U01-50M002 | RIGHT REAR WINDOW ASSEMBLY | 1 |
| 2 | 32S06U01-50M006 | RIGHT REAR DOOR UPPER SEALING ASSEMBLY | 1 |
| 3 | 32S05U01-50PKM001 | RIGHT GAS SPRING ASSEMBLY | 1 |
| 4 | 32S05U01-50M004 | RIGHT REAR DOOR HINGE ASSEMBLY | 2 |
| 5 | 32S05U01-50M007 | RIGHT REAR BASE HINGE | 2 |
| 6 | 32S05U01-40-003 | DOOR BASE LEDGE | 1 |
| 7 | 32S05U01-50W001 | RIGHT REAR DOOR BASE WELDED | 1 |
| 8 | 32S05U01-40M005 | DOOR BASE FIXING ASSEMBLY | 1 |
| 9 | 32S06U01-50M004 | RIGHT REAR DOOR SEALING ASSEMBLY | 1 |
| 10 | 32S06U01-50M001 | RIGHT REAR BOTTOM SEALING ASSEMBLY | 1 |
| 11 | 00-00M003 | POLYCARBONATE FIXING ASSEMBLY | 13 |
| 12 | 32S06U01-50W001 | RIGHT DOOR FRAME WELDED | 1 |
| 13 | 001703 | DOOR HANDLE | 1 |
| 14 | 000841 | OUTER DOOR LOCK | 1 |
| 15 | 001744 | RIGHT INNER DOOR LOCK | 1 |
| 16 | 32S06U01-50M005 | RIGHT REAR DOOR EPDM ASSEMBLY | 1 |
| 17 | 32S06U01-50M003 | RIGHT REAR DOOR STOP ASSEMBLY | 1 |
| 18 | 32S06R01-50-001 | RIGHT REAR DOOR ABS | 1 |
| 19 | 002658^32S06U01S40 | RUBBER PROFILE "PIRELA STRAIGHT" | 1 |
| 20 | 002454^32S06U01S40 | RUBBER PROFILE "SARAZIN SIDE" | 1 |

ELECTROINSTALLATION

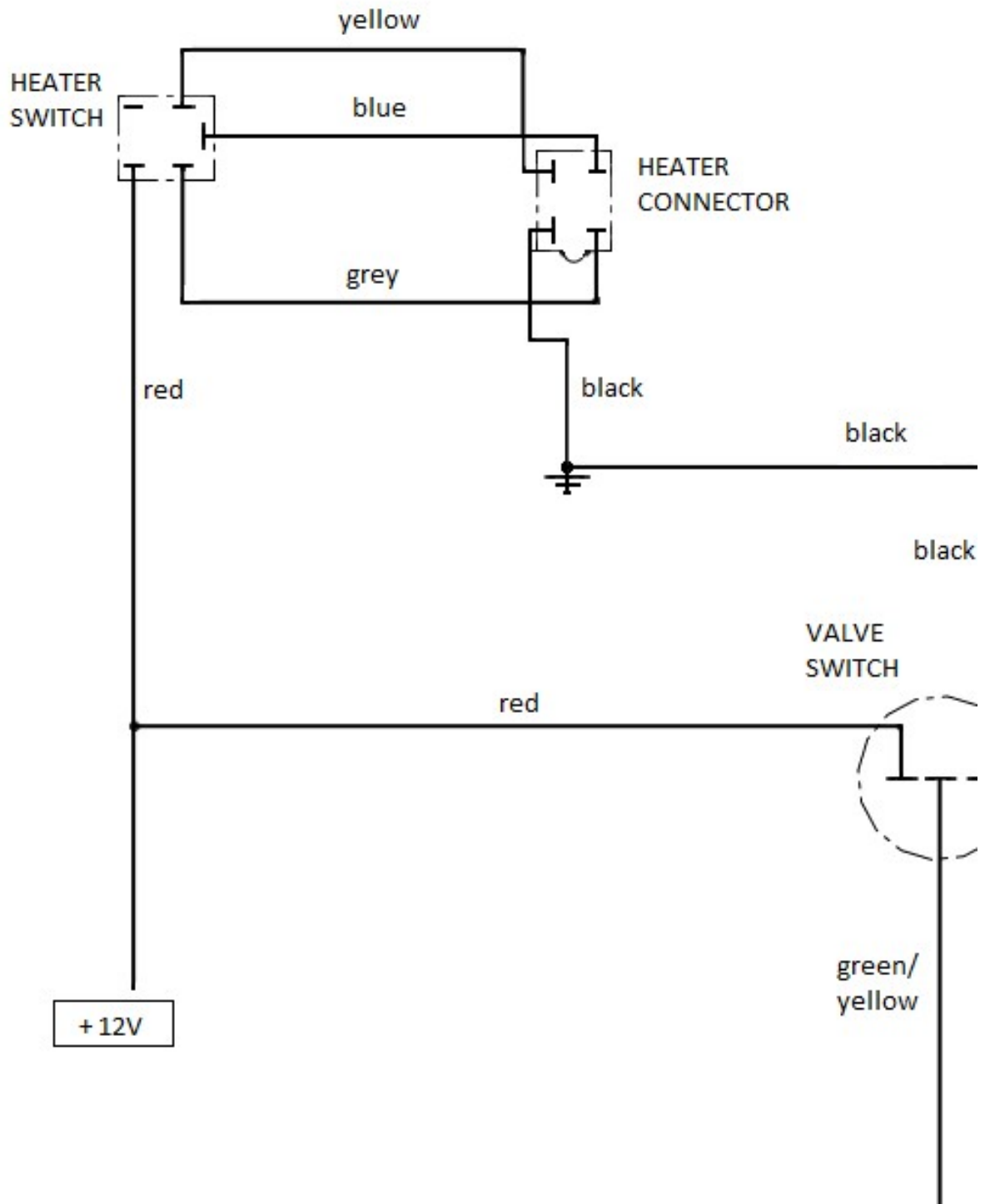
Overall wiring diagram (wiper)



Overall wiring diagram (washer)













Overall wiring diagram (heater)

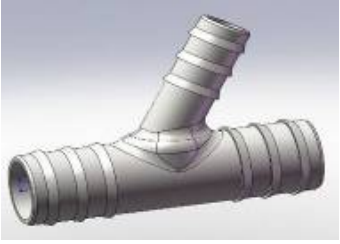








| Position | Catalogue no. | Description | Qty |
|----------|-----------------|---------------------------|-----|
| 1 | 000968 | SWITCH WIPER /WASHER /OFF | 1 |
| 2 | 000885 | WASHER TANK | 1 |
| 3 | 001576 | WASHER MOTOR | 1 |
| 4 | 001652 | FUSE BOX 2x1 | 1 |
| 5 | 002764 | WIPER MOTOR 12V | 1 |
| 6 | 32S05U01-01M001 | WIPER HARNESS | 1 |
| 7 | 32S05U01-02-001 | HEATER HOLDER | 1 |
| 8 | 002491 | AIR VENT VALVE | 1 |
| 9 | 002386 | ELECTROMAGNETIC VALVE | 1 |
| 10 | 001367 | TIGHTENING STRAP 12-22MM | 2 |
| 11 | 002642 | TIGHTENING STRAP 14-27MM | 10 |
| 12 | 002643 | TIGHTENING STRAP 21-38MM | 2 |
| 13 | 001368 | TIGHTENING STRAP 40-60MM | 4 |
| 14 | 002863 | AIR VENT SMALLER | 2 |
| 15 | 002379 | AIR VENT BIGGER | 2 |
| 16 | 002795 | AIR HOSE | 1 |
| 17 | 002705 | AL SELFGLUED TAPE | 1 |
| 18 | 003536 | HEATER TUBE "Y" SMALL | 1 |
| 19 | 002502 | HEATER TUBE "Y" LARGE | 1 |
| 20 | 002391 | EL.VENT SWITCH | 1 |
| 21 | 002702 | HEATER SWITCH | 1 |
| 22 | 32S05U01-02M001 | HEATER HARNESS | 1 |
| 23 | 000896 | HEATER HOSE | 1 |
| 24 | 002624 | HEATER | 1 |
| 25 | 32S05U01-03M001 | WASHER HARNESS | 1 |

SEE PICTURES ON NEXT PAGES

| | | |
|---|--|---|
|  |  |  |
| <p>Position : 1</p> | <p>Position : 2</p> | <p>Position : 3</p> |
| <p>Catalogue no.: 000968</p> | <p>Catalogue no.: 000885</p> | <p>Catalogue no.: 001576</p> |
|  |  |  |
| <p>Position : 4</p> | <p>Position : 5</p> | <p>Position : 6</p> |
| <p>Catalogue no.: 001652</p> | <p>Catalogue no.: 002764</p> | <p>Catalogue no.: 32S05U01-01M001</p> |
|  |  |  |
| <p>Position : 7</p> | <p>Position : 8</p> | <p>Position : 9</p> |
| <p>Catalogue no.: 32S05U01-02-001</p> | <p>Catalogue no.: 002491</p> | <p>Catalogue no.: 002386</p> |

| | | |
|---|---|---|
|  |  |  |
| Position : 10 | Position : 11 | Position : 12 |
| Catalogue no.: 001367 | Catalogue no.: 002642 | Catalogue no.: 002643 |
|  |  |  |
| Position : 13 | Position : 14 | Position : 15 |
| Catalogue no.: 001368 | Catalogue no.: 002863 | Catalogue no.: 002739 |
|  |  |  |
| Position : 16 | Position : 17 | Position : 18 |
| Catalogue no.: 002795 | Catalogue no.: 002705 | Catalogue no.: 003536 |

| | | |
|---|--|---|
|  |  |  |
| <p>Position : 19</p> | <p>Position :20</p> | <p>Position : 21</p> |
| <p>Catalogue no.: 002502</p> | <p>Catalogue no.: 002391</p> | <p>Catalogue no.: 002702</p> |
|  |  |  |
| <p>Position : 22</p> | <p>Position : 23</p> | <p>Position : 24</p> |
| <p>Catalogue no.: 32S05U01-02M001</p> | <p>Catalogue no.: 000896</p> | <p>Catalogue no.: 002624</p> |
|  | | |
| <p>Position : 25</p> | | |
| <p>Catalogue no.: 32S05U01-03M001</p> | | |