

HardCabs

A DFK AMERICA COMPANY

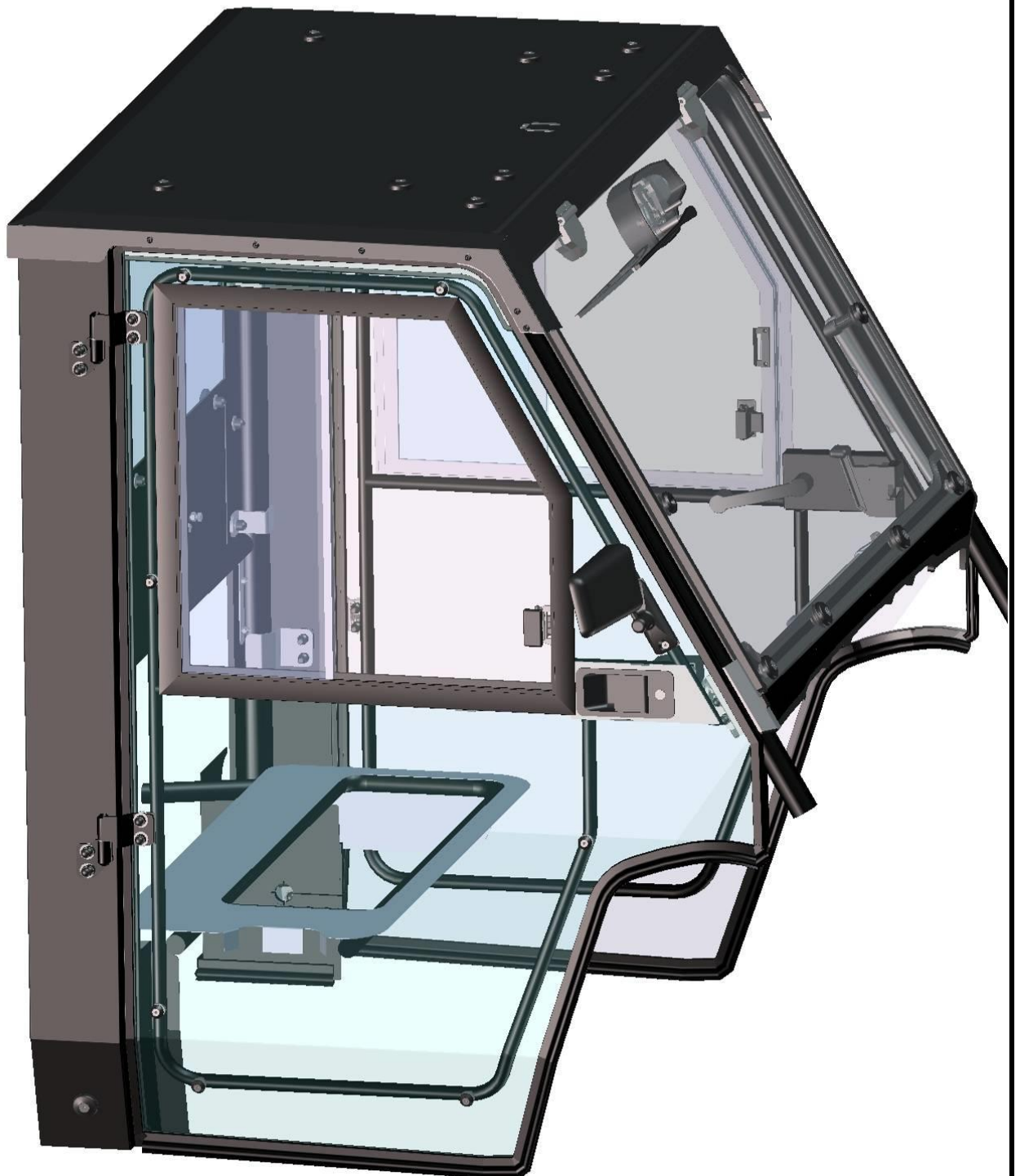
SPARE - PARTS CATALOG

KAWASAKI

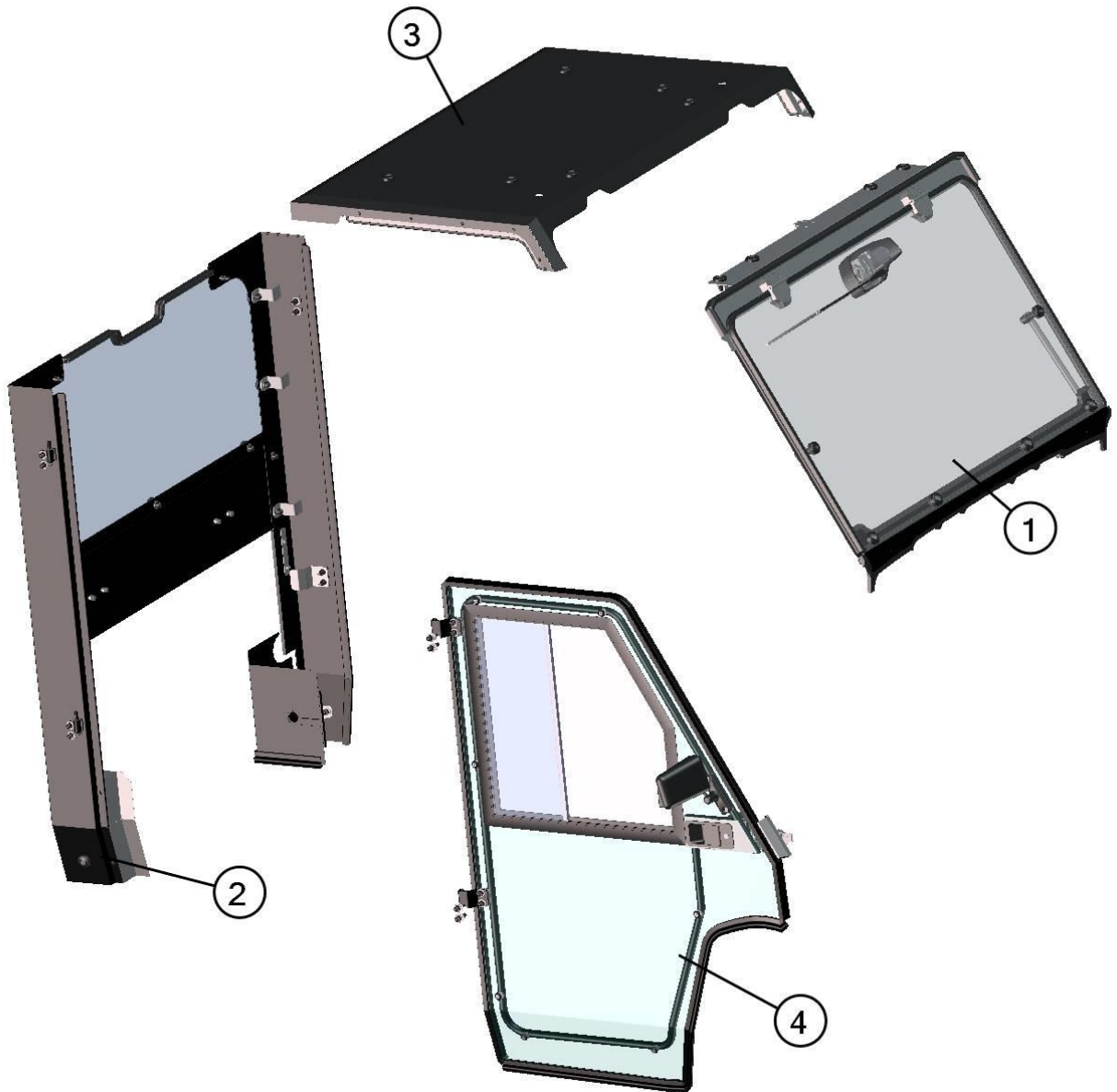
MULE 4010



PREVIEW CAB



2

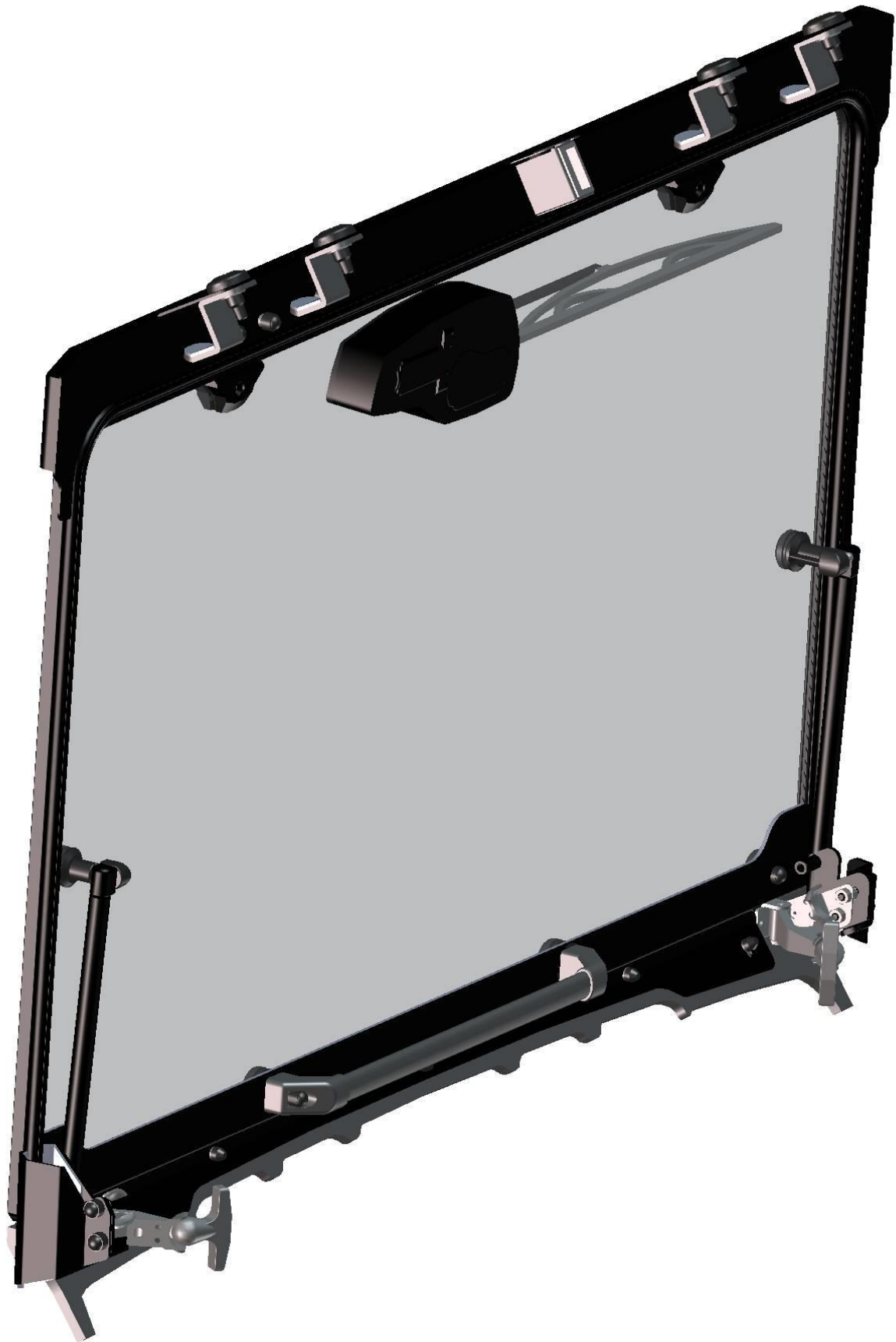


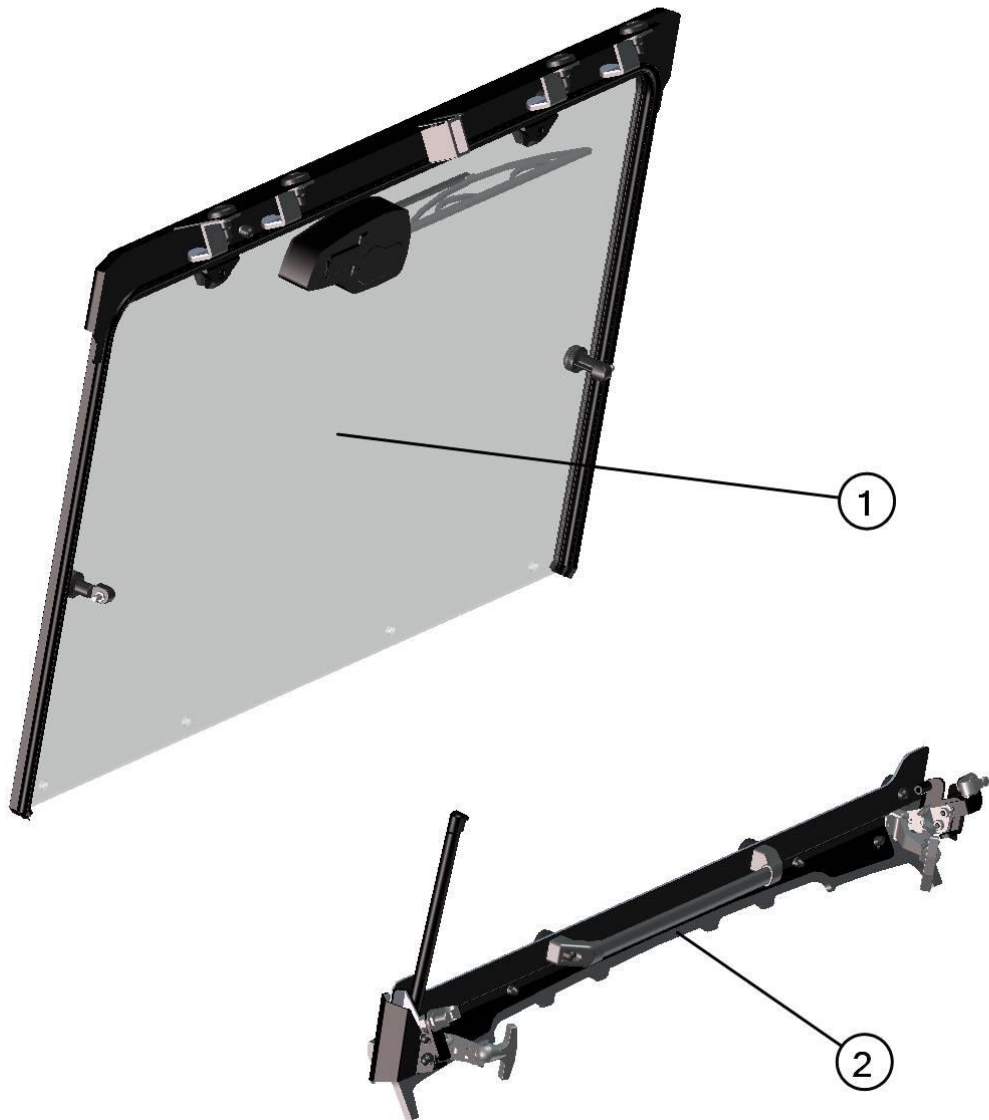
3

Position	Catalogue no.	Description	Qty
1	42S01U01S10	FRONT PANEL MOVABLE	1
2	42S01U01S20	REAR PANEL	1
3	42S01U01S30	ROOF	1
4	42S01U01S50	RIGHT DOOR	1

FOR DEMAND THE LEFT DOOR USE 42S01U01S40
THE LEFT DOOR AND THE RIGHT DOOR IS SIMILAR JUST USE CORRECT (LEFT OR RIGHT) TABLE

FRONT PANEL





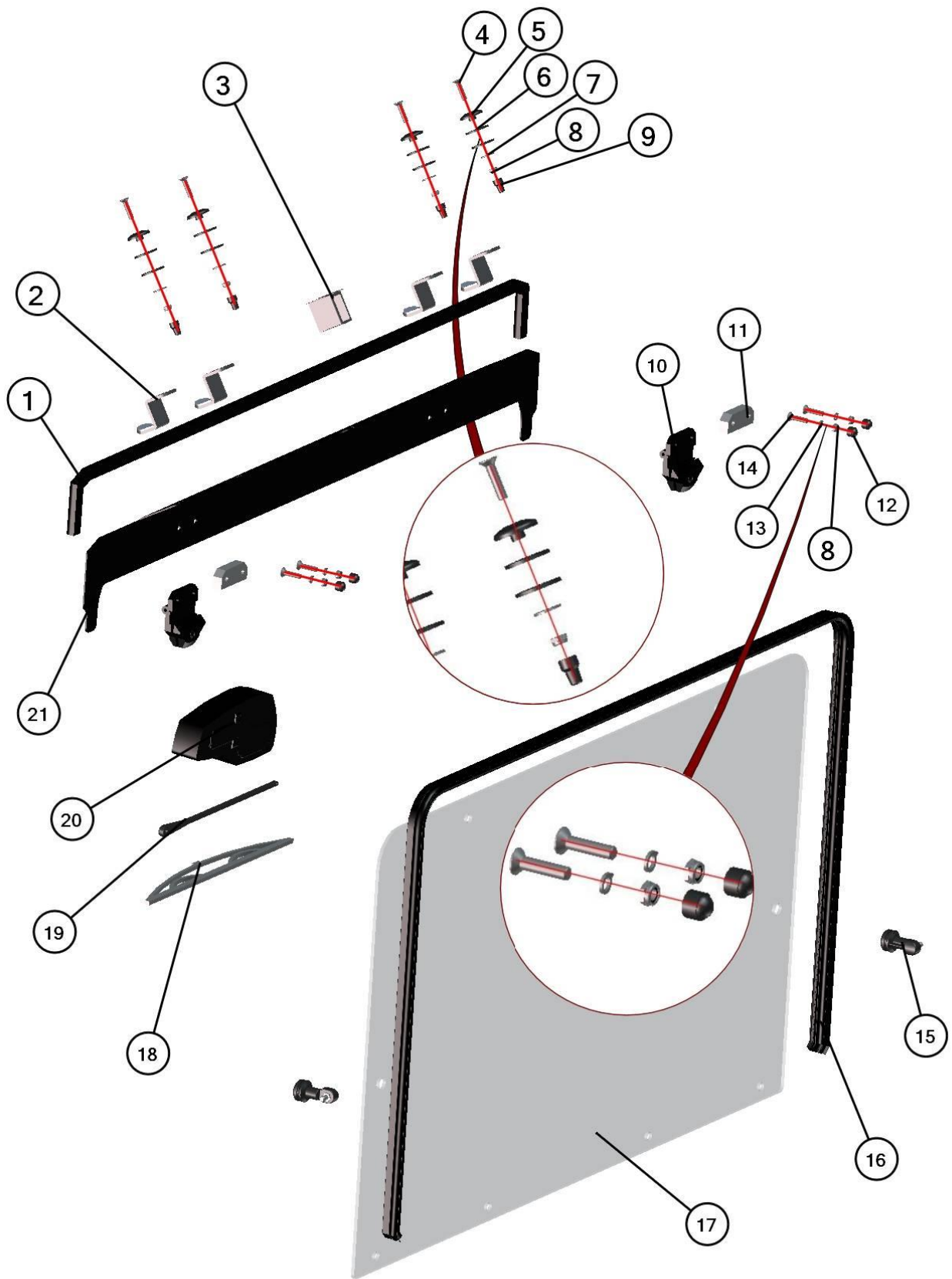
5

Position	Catalogue no.	Description	Qty
1	*****	UPPER FRONT PANEL ASSEMBLY	1
2	*****	BOTTOM FRONT PANEL ASSEMBLY	1

UPPER FRONT PANEL ASSEMBLY



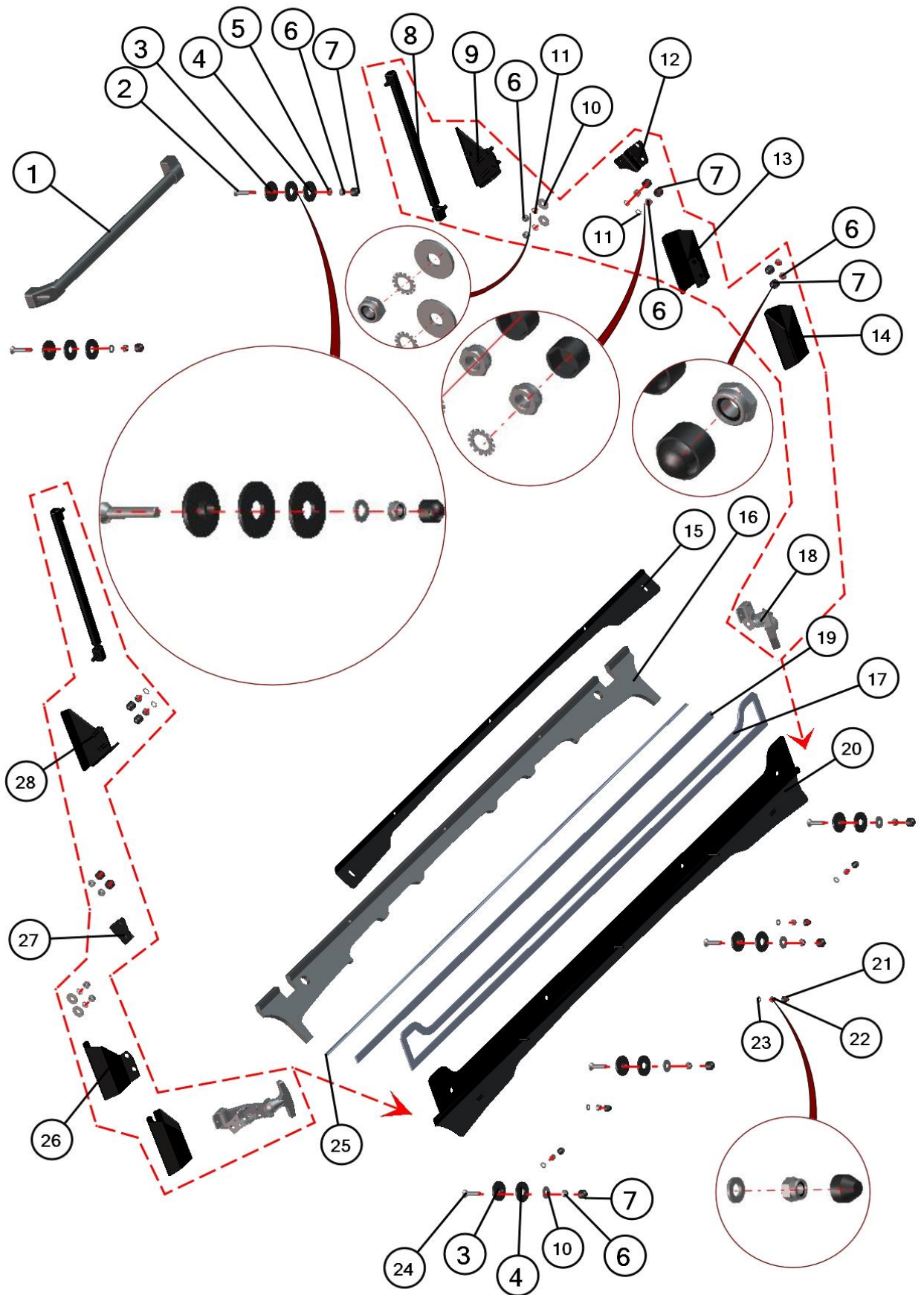
6



Position	Catalogue no.	Description	Qty
1	001589^42S01U01S10	RUBBER PROFILE "APOLLO"	1
2	42S01U01-30-009	FRONT UPPER LEDGE HOLDER	4
3	42S01U01-10-010	SWITCH HOLDER	1
4	001760	SCREW M8x65	4
5	001429	PLASTIC WASHER 8	4
6	001428	RUBBER WASHER 8	8
7	001407	WASHER 8 LARGE	4
8	001388	SELF-LOCKING NUT M8	8
9	001308	PLASTIC NUT COVER OK 13 LONG	4
10	000862	FRONT WINDOW HINGE	2
11	000863	HINGE WASHER	2
12	001309	PLASTIC NUT COVER OK 13	4
13	001387	WASHER 8	4
14	002607	SCREW M8x40	4
15	001693	GAS SPRING HOLDER	2
16	001012^42S01U01-10M001	RUBBER PROFILE "PIRELA GLASS"	1
17	42S01U01-10-001	FRONT WINDOW GLASS	1
18	000798	WIPER LATCH	1
19	001764	WIPER ARM	1
20	002764	WIPER MOTOR	1
21	42S01U01-10-003	FRONT UPPER LEDGE	1

BOTTOM FRONT PANEL ASSEMBLY





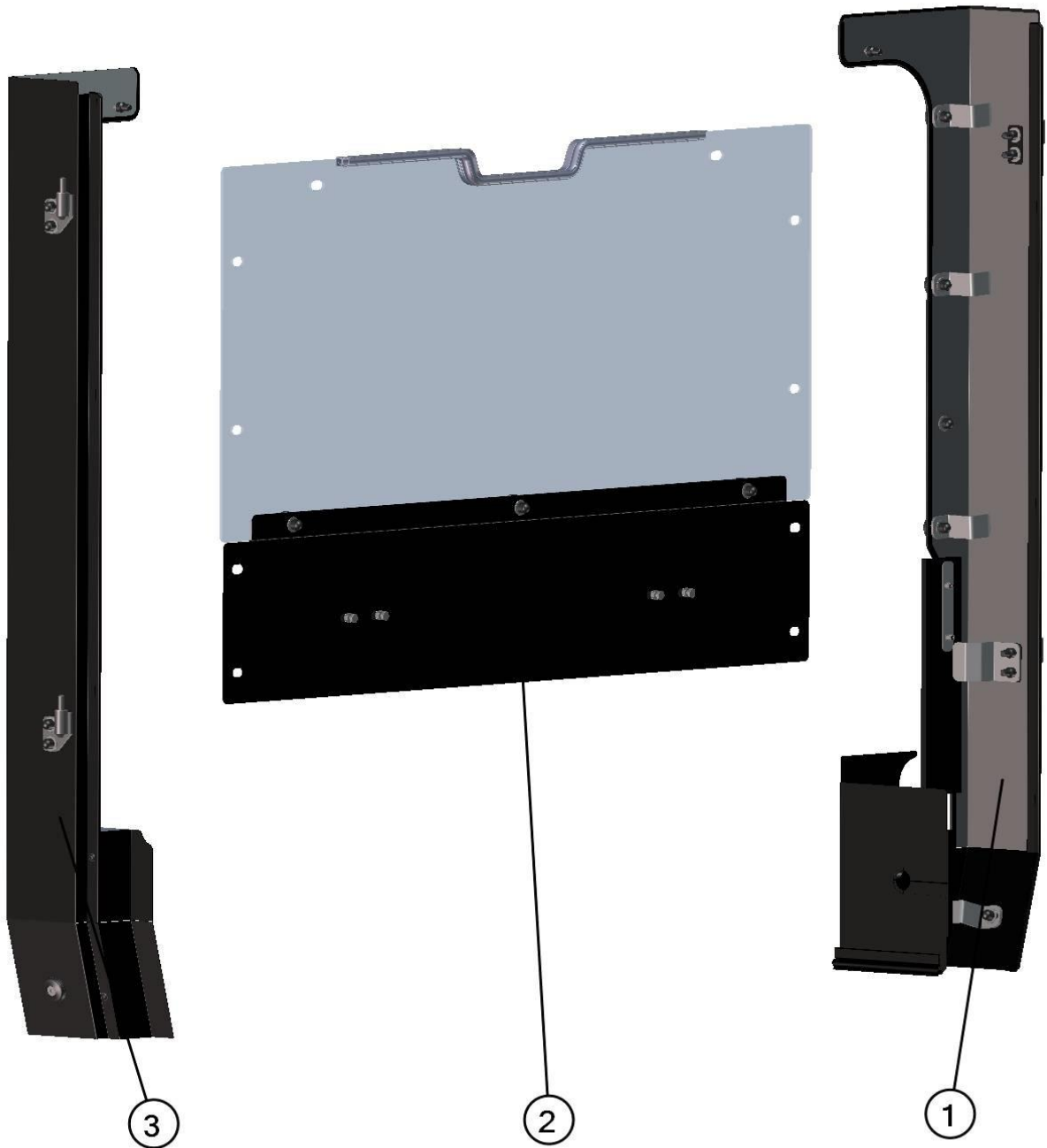
10

Position	Catalogue no.	Description	Qty
1	002496	FRONT WINDOW HANDLE	1
2	001694	SCREW M8x45	2
3	001429	PLASTIC WASHER 8	6
4	001428	RUBBER WASHER 8	8
5	001387	WASHER 8	2
6	001388	SELF-LOCKING NUT M8	18
7	001309	PLASTIC NUT COVER OK 13	14
8	002494	GAS SPRING	2
9	42S01U01-10W040	FRONT RIGHT HOLDER WELDED	1
10	001407	WASHER 8 LARGE	8
11	001489	SERRATED-LOCK WASHER 8	8
12	42S01U01-10-044	RIGHT WINDOW LOCK HOLDER	1
13	42S01U01-10-045	FRONT RIGHT HOLDER PRESS	1
14	002590	RUBBER SEAL "SEMPER"	2
15	42S01U01	FRONT BOTTOM LEDGE METAL	1
16	42S01U01-10-005	FRONT BOTTOM LEDGE EPDM	1
17	001771^42S01U01-10M004	SEAL "KR 15x4"	1
18	002384	FRONT WINDOW LOCK	2
19	001771^42S01U01S10	SEAL "KR 15x4"	1
20	42S01U01-10W001	FRONT BOTTOM LEDGE WELDED	1
21	001348	PLASTIC NUT COVER OK 10	5
22	001392	SELF-LOCKING NUT M8	5
23	001426	WASHER 6	5
24	001760	SCREW M8x35	4
25	001354^42S01U01-10M004	SEAL "KR 9x3"	1
26	42S01U01-10-055	FRONT LEFT HOLDER PRESS	1
27	42S01U01-10-054	LEFT WINDOW LOCK HOLDER	1
28	42S01U01-10W050	FRONT LEFT HOLDER WELDED	1

REAR PANEL



12

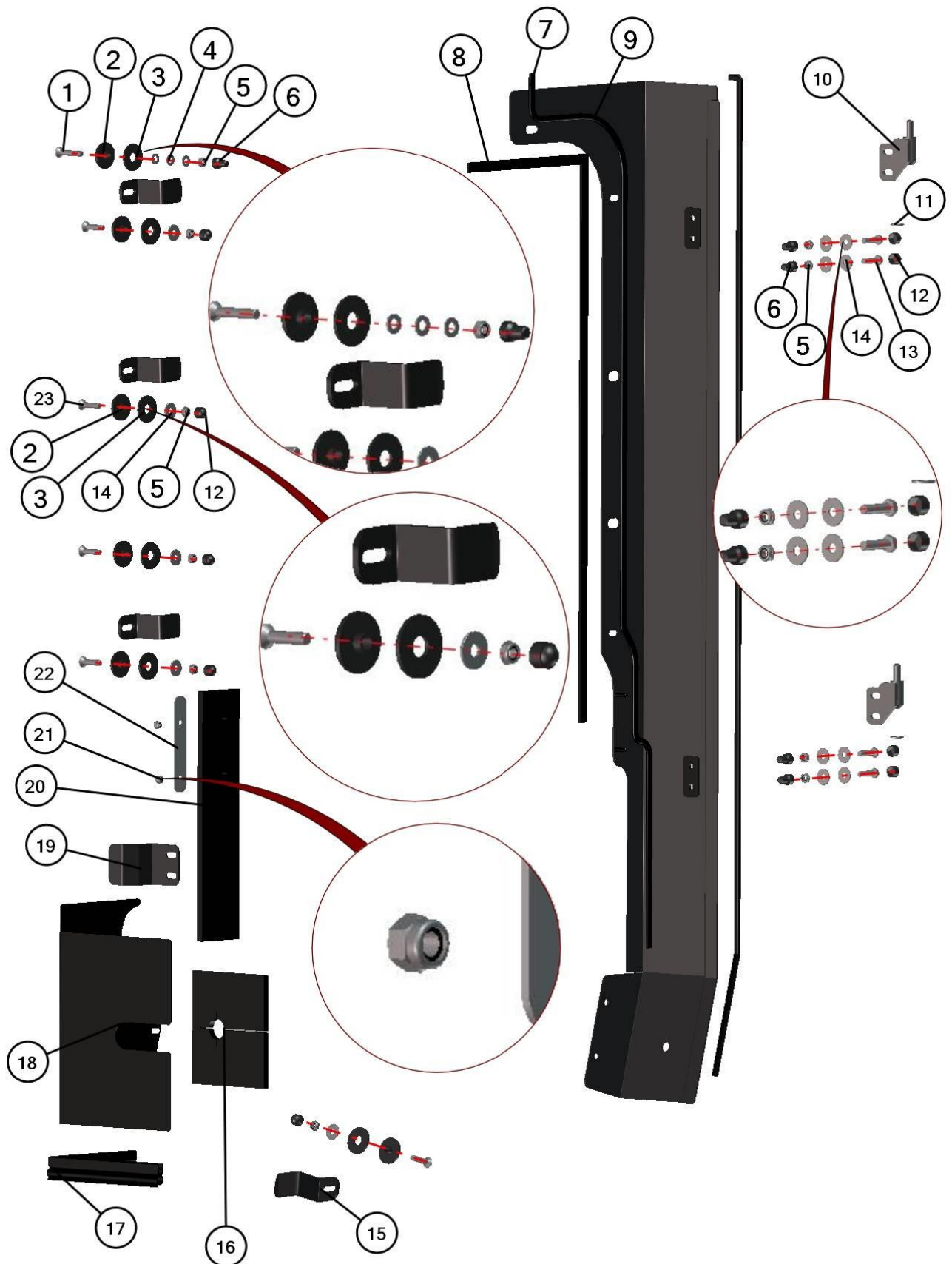


13

Position	Catalogue no.	Description	Qty
1	*****	LEFT REAR ASSEMBLY	1
2	*****	CENTRAL REAR ASSEMBLY	1
3	*****	RIGHT REAR ASSEMBLY	1

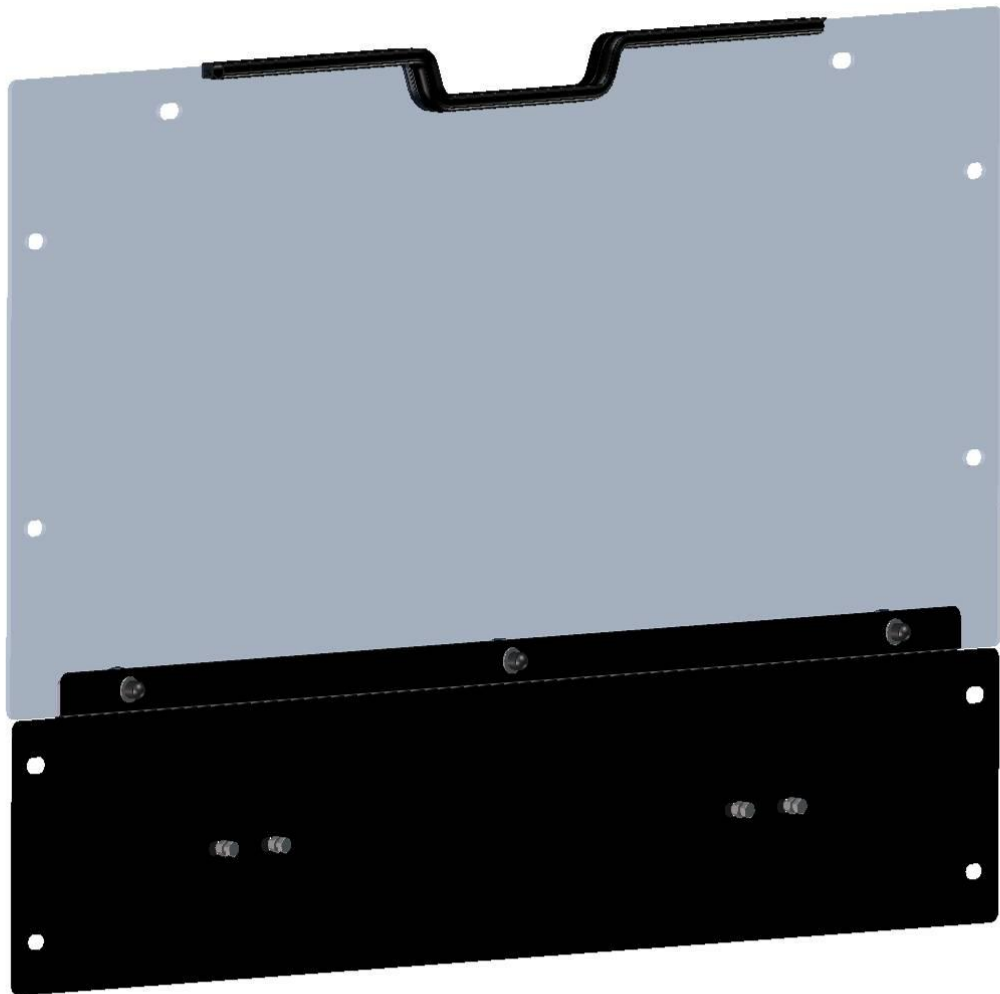
LEFT REAR ASSEMBLY



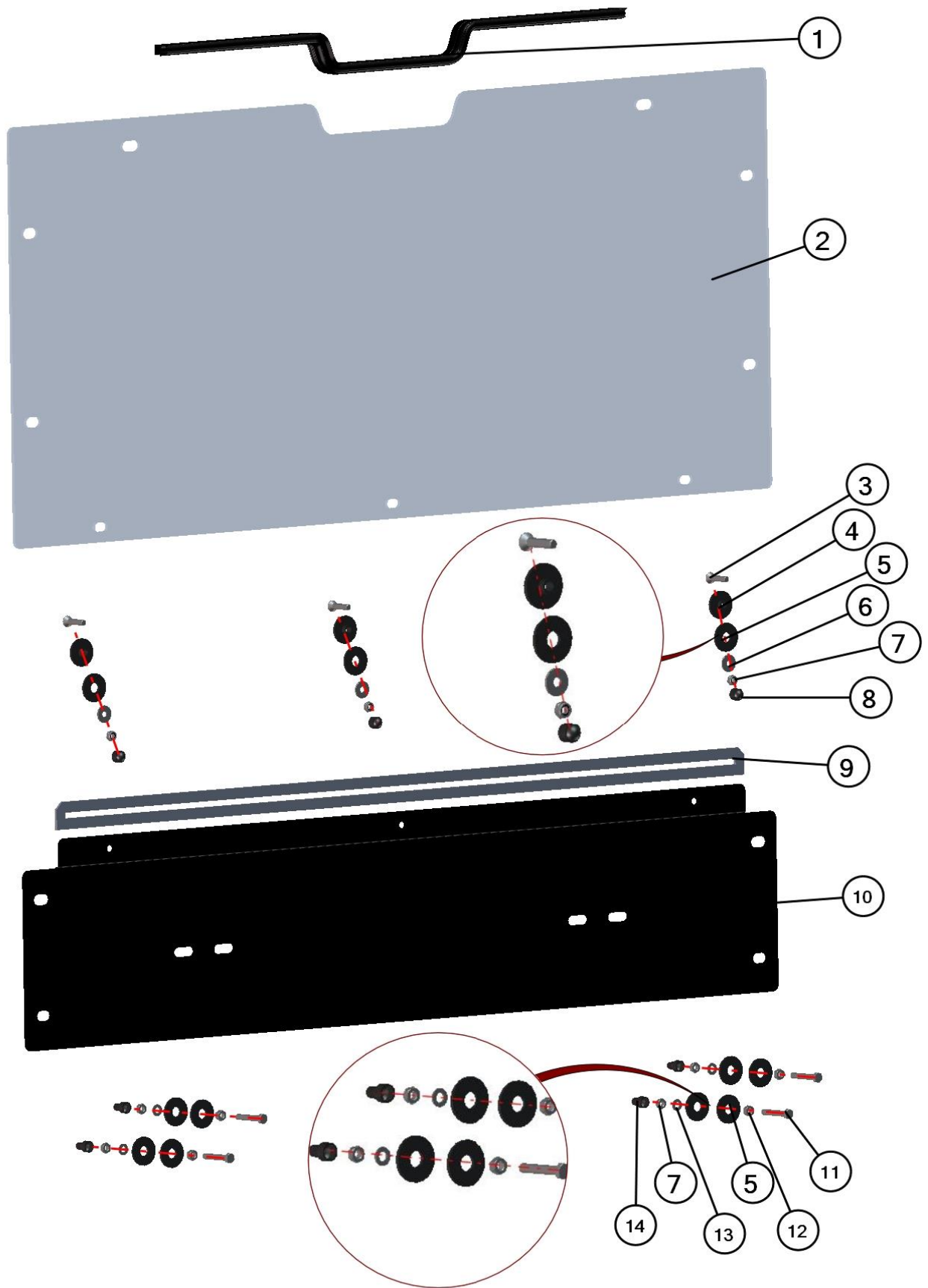


Position	Catalogue no.	Description	Qty
1	001694	SCREW M8x45	1
2	001429	PLASTIC WASHER 8	6
3	001428	RUBBER WASHER 8	6
4	001387	WASHER 8	3
5	001388	SELF-LOCKING NUT M8	10
6	001308	PLASTIC NUT COVER OK 13 LONG	5
7	001001^42S01U01-20M001	RUBBER PROFILE "LEMOVKA"	1
8	001771^42S01U01-20M001	SEAL "KR 15x4"	1
9	42S01U01-20W001	LEFT DOOR BASE	1
10	00-105U-W002	LEFT HINGE BASE	2
11	001485	WASHER 10	2
12	001309	PLASTIC NUT COVER OK 13	9
13	001411	SCREW M8x30	4
14	001407	WASHER 8 LARGE	13
15	42S01U01-20-009	DOOR BASE HOLDER	4
16	42S01U01-20-014	LEFT REAR BOTTOM LEDGE EPDM	1
17	001005^42S01U01-20M006	RUBBER PROFILE "PIRELA STRAIGHT"	1
18	42S01U01-20-013	LEFT REAR BOTTOM LEDGE	1
19	42S01U01-20-016	DOOR BASE HOLDER LARGE	1
20	42S01U01-20-008	LEFT CENTRAL REAR LEDGE	1
21	001392	SELF-LOCKING NUT M6	2
22	42S01U01-20-010	LEFT CENTRAL REAR LEDGE PRESS	1
23	001395	SCREW M8x35	5

CENTRAL REAR ASSEMBLY



17



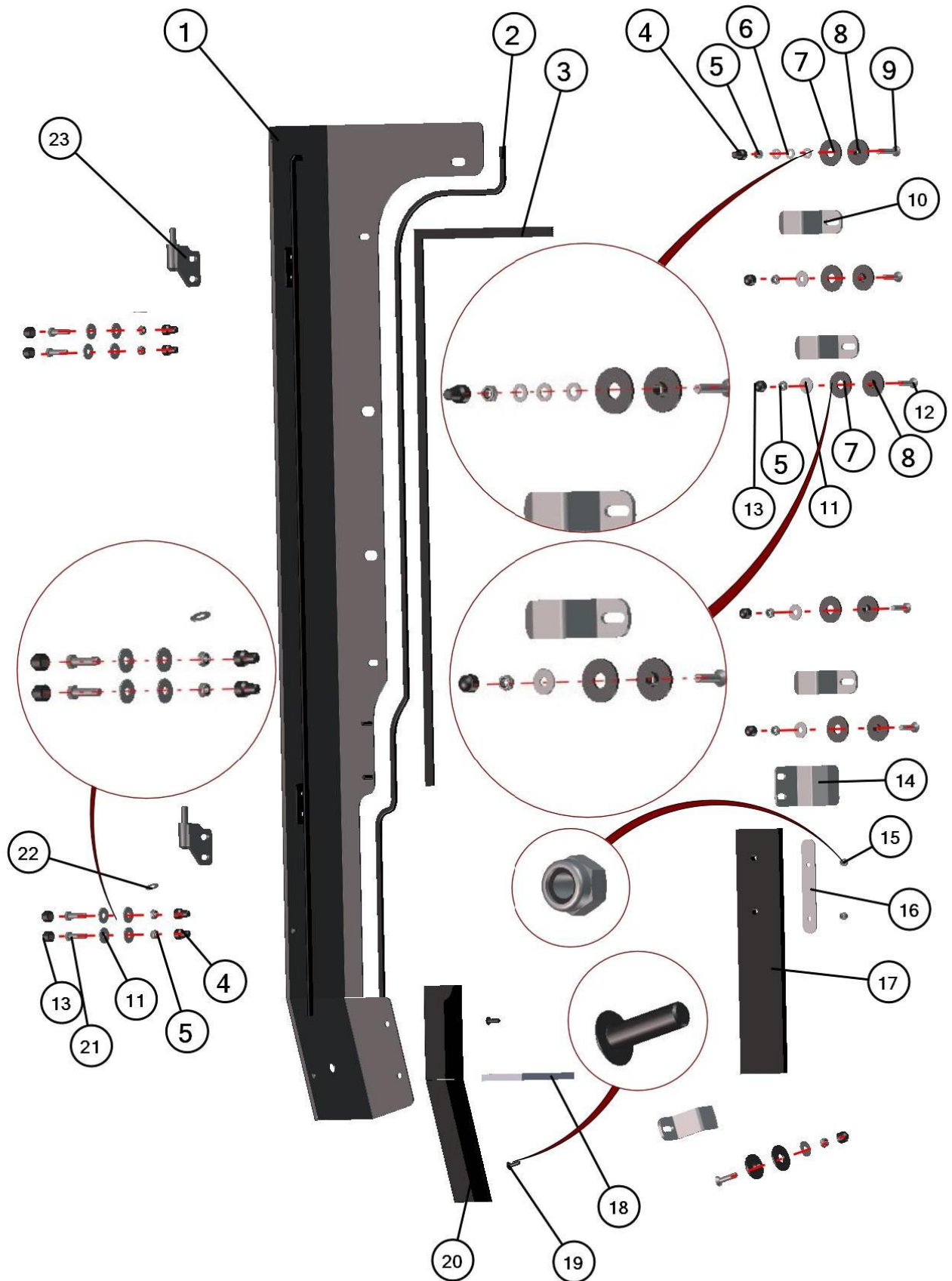
18

Position	Catalogue no.	Description	Qty
1	001012^42S01U01-20M004	RUBBER PROFILE " PIRELA GLASS"	1
2	42S01U01-20-003	REAR WINDOW POLYCARBONATE	1
3	001395	SCREW M8x35	3
4	001429	PLASTIC WASHER 8	3
5	001428	RUBBER WASHER 8	11
6	001407	WASHER 8 LARGE	3
7	001388	SELF-LOCKING NUT M8	7
8	001309	PLASTIC NUT COVER OK 13	3
9	001771^42S01U01-20M005	SEAL "KR 15x4"	1
10	42S01U01-20-002	REAR CENTRAL LEDGE	1
11	001438	SCREW M8x50	4
12	001475	NUT M8	4
13	001387	WASHER 8	4
14	001308	PLASTIC NUT COVER OK 13 LONG	4

RIGHT REAR ASSEMBLY

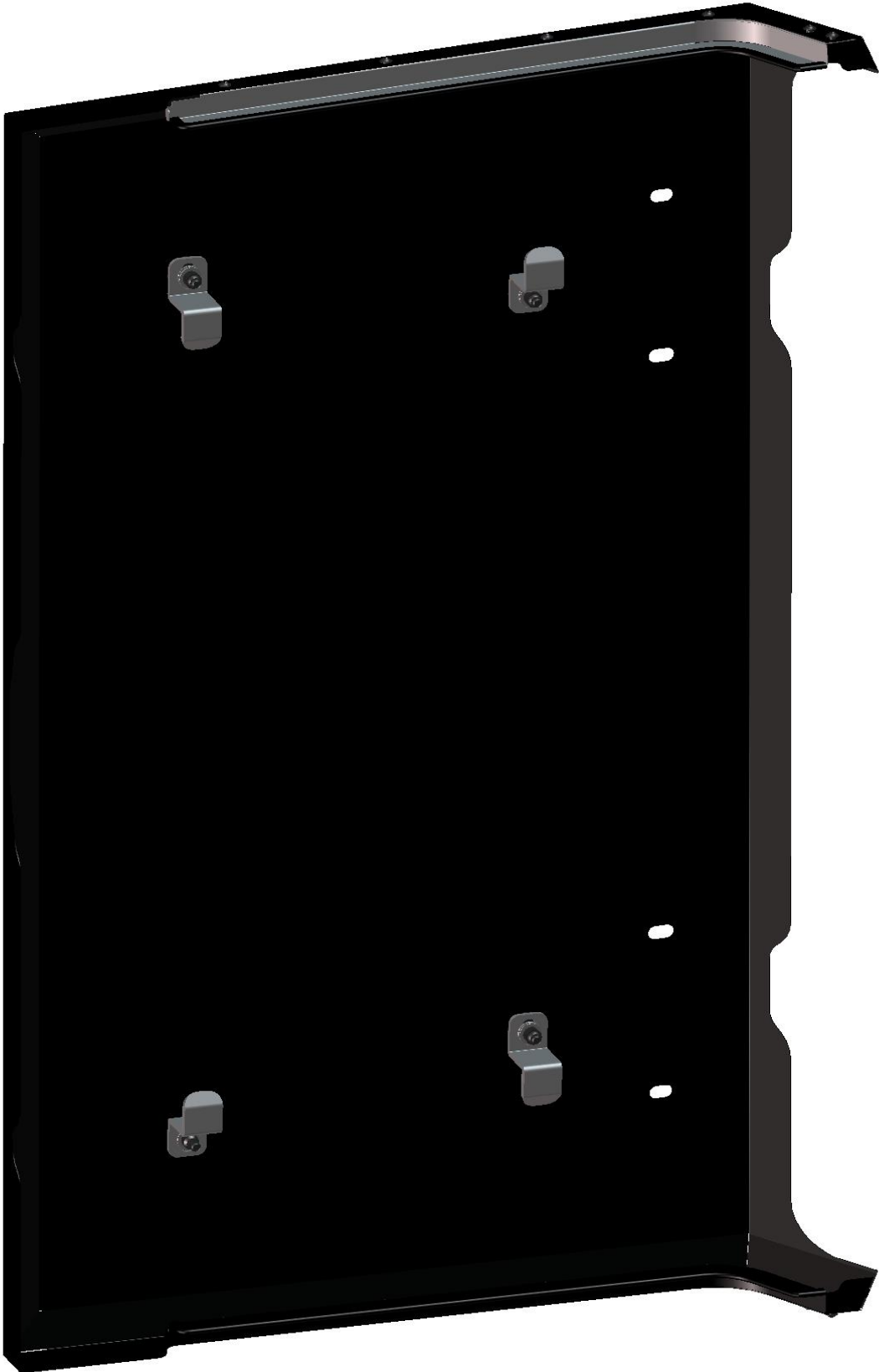


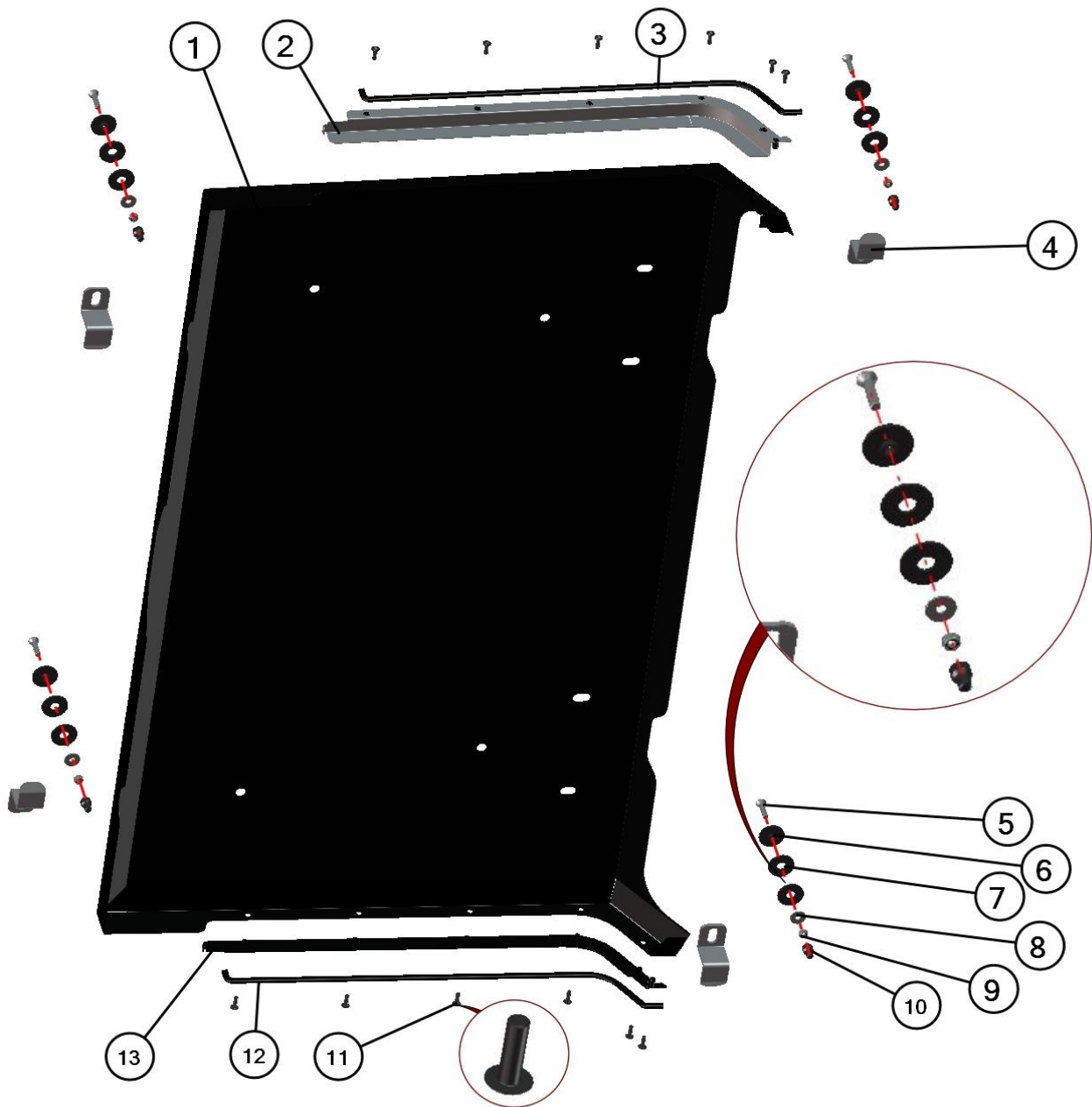
20



Position	Catalogue no.	Description	Qty
1	42S01U01-20W002	RIGHT DOOR BASE	1
2	001001^42S01U01-20M003	RUBBER PROFILE "LEMOVKA"	1
3	001771^42S01U01-20M003	SEAL "KR 15x4"	1
4	001308	PLASTIC NUT COVER OK 13	5
5	001388	SELF-LOCKING NUT M8	10
6	001387	WASHER 8	3
7	001428	RUBBER WASHER 8	6
8	001429	PLASTIC WASHER 8	6
9	001694	SCREW M8x45	1
10	42S01U01-20-009	DOOR BASE HODER	4
11	001407	WASHER 8 LARGE	13
12	001395	SCREW M8x35	5
13	001309	PLASTIC NUT COVER OK 13	9
14	42S01U01-20-016	DOOR BASE HOLDER LARGE	1
15	001392	SELF-LOCKING NUT M6	2
16	42S01U01-20-010	RIGHT BOTTOM LEDGE PRESS	1
17	42S01U01-20-008	RIGHT BOTTOM LEDGE EPDM	1
18	42S01U01-20-015	RIGHT LEDGE EPDM	1
19	001723	SCREW M6x20	2
20	42S01U01-20W005	REAR RIGHT BOTTOM LEDGE	1
21	001411	SCREW M8x30	4
22	001485	WASHER 10	2
23	00-105U-W001	RIGHT DOOR HINGE BASE	2

ROOF PANEL

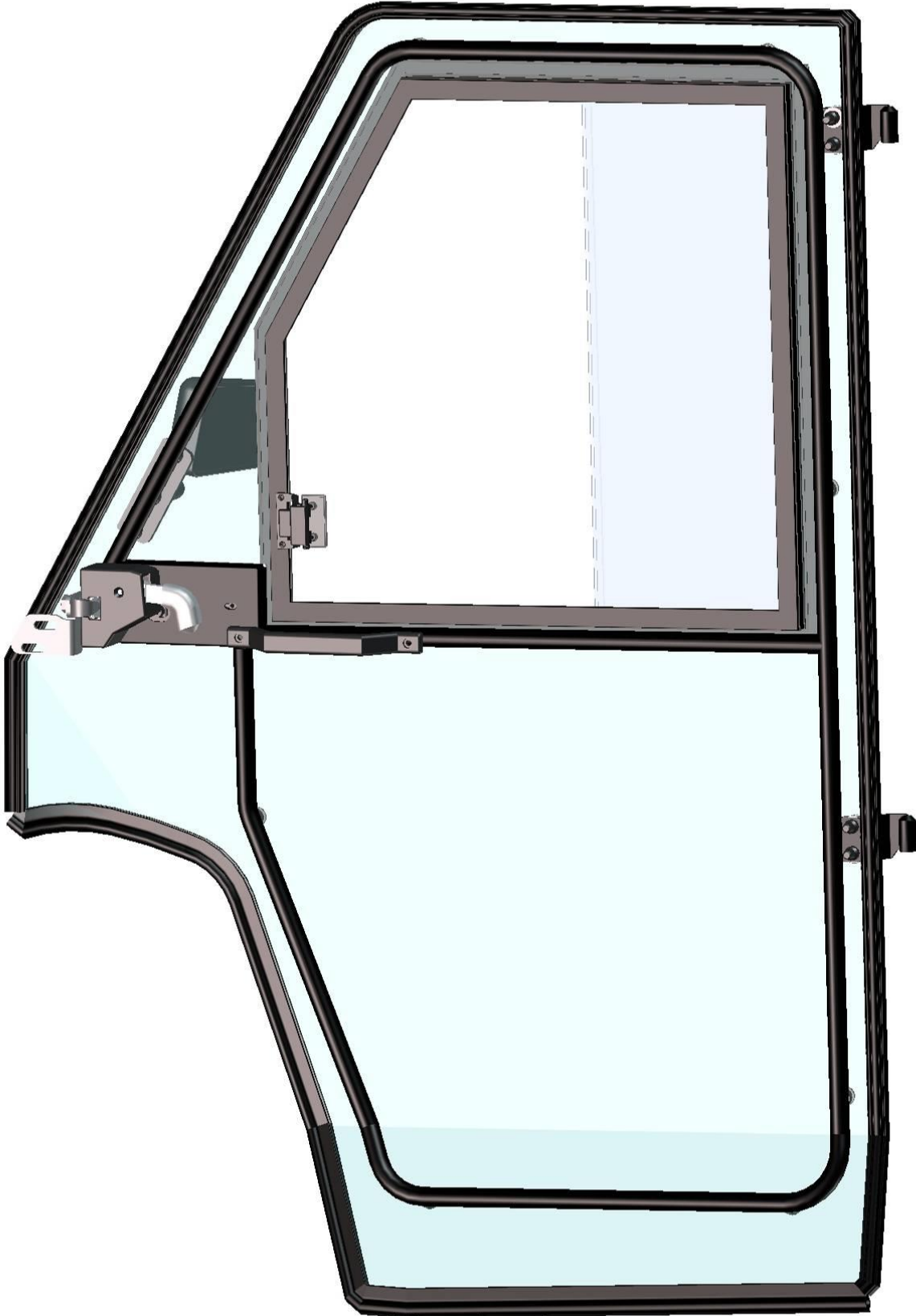




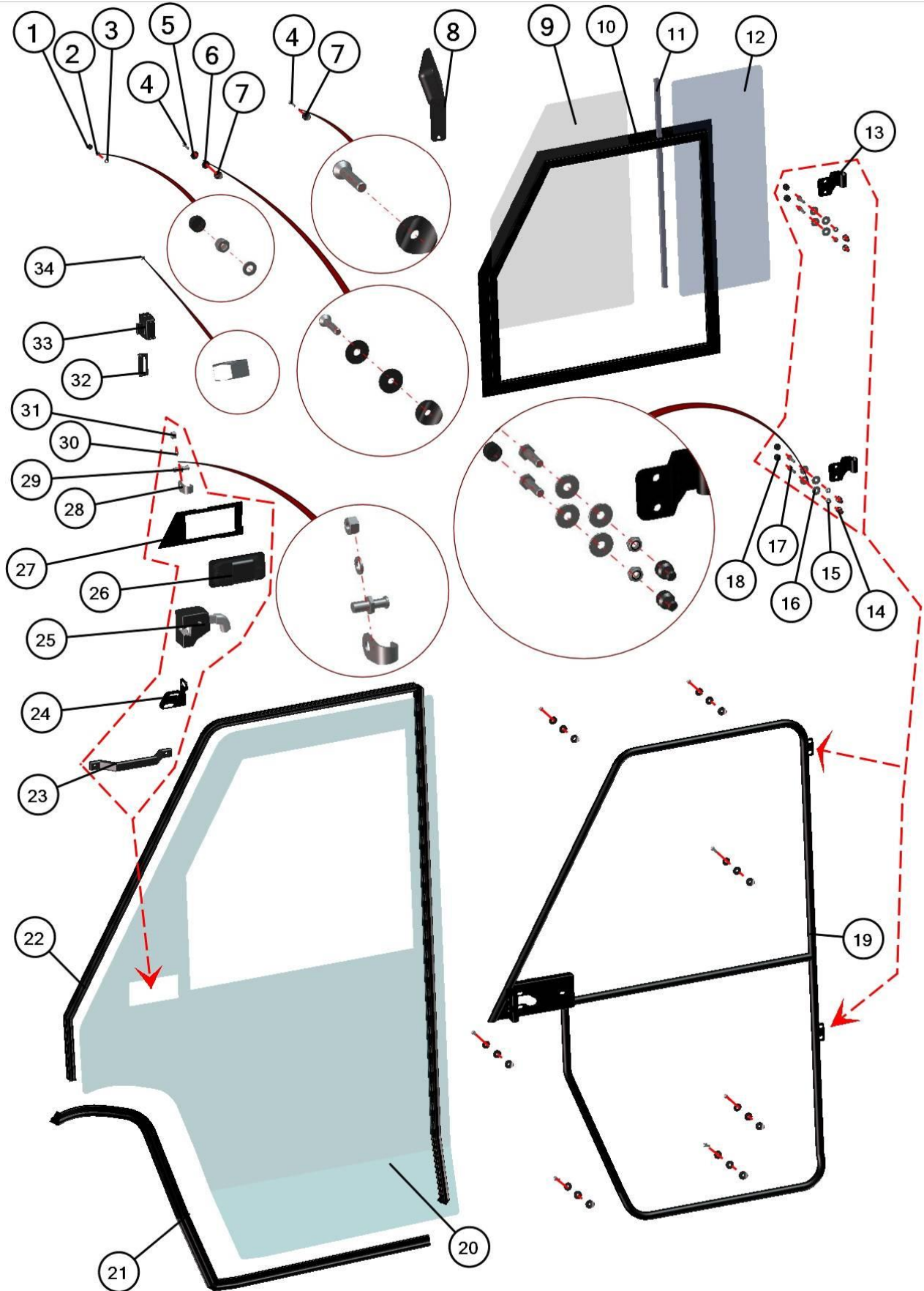
24

Position	Catalogue no.	Description	Qty
1	42S01U01-30W004	ROOF PANEL	1
2	42S01U01-30W002	RIGHT ROOF LEDGE	1
3	001001^42S01U01-30M003	RUBBER PROFILE "LEMOVKA"	1
4	42S01U01-30-009	ROOF HOLDER	4
5	001760	SCREW M8x35	4
6	001429	PLASTIC WASHER 8	4
7	001428	RUBBER WASHER 8	8
8	001407	WASHER 8 LARGE	4
9	001388	SELF-LOCKING NUT M8	4
10	001308	PLASTIC NUT COVER OK 13 LONG	4
11	001723	SCREW M6x20	12
12	001001^42S01U01-30M002	RUBBER PROFILE "LEMOVKA"	1
13	42S01U01-30W001	LEFT ROOF LEDGE	1

DOOR LEFT AND DOOR RIGHT



25



26

RIGHT DOOR TABLE

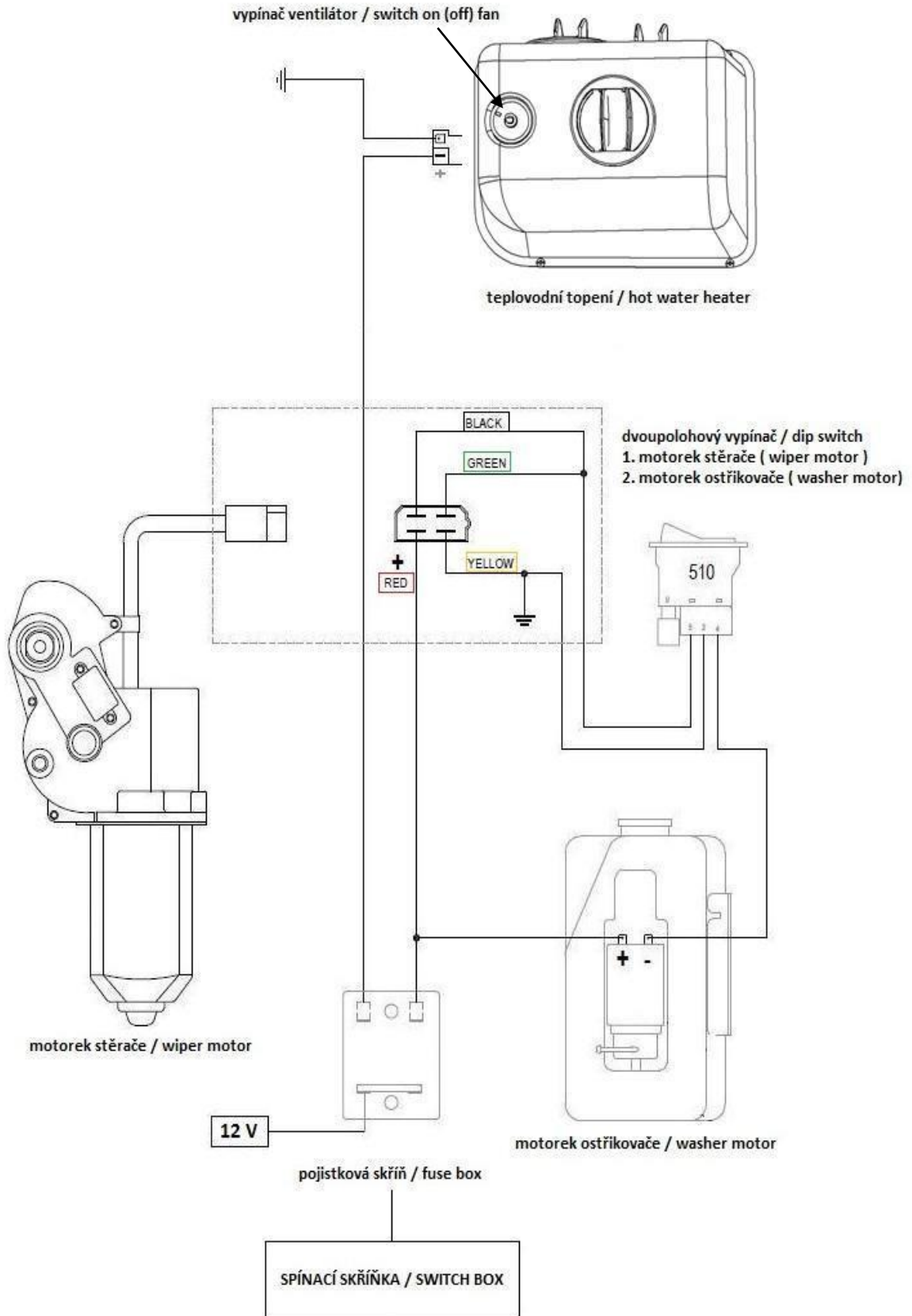
Position	Catalogue no.	Description	Qty
1	001348	PLASTIC NUT COVER OK 10	1
2	001392	SELF-LOCKING NUT M6	1
3	001426	WASHER 6	1
4	001701	SCREW M6x30	9
5	001715	PLASTIC WASHER 6	8
6	001735	RUBBER WASHER 6	8
7	001736	SEAT WASHER 6	9
8	002774	RIGHT REAR MIRROR	1
9	42S01U01-50-013	DOOR WINDOW MOVABLE GLASS	1
10	42S01U01-50-009	RIGHT DOOR WINDOW FRAME	1
11	001083^42S01U01-50M003	PROFILE AL "U" BETWEEN WINDOWS	1
12	42S01U01-50-012	DOOR WINDOW SOLID POLYCARBONATE	1
13	32S01U02-50W002	RIGHT DOOR HINGE	2
14	001308	PLASTIC NUT COVER OK 13 LONG	4
15	001388	SELF-LOCKING NUT M8	4
16	001407	WASHER 8 LARGE	8
17	001411	SCREW M8x30	4
18	001309	PLASTIC NUT COVER OK 13	4
19	42S01U01-50W001	RIGHT DOOR FRAME WELDED	1
20	42S01U01-50-001	RIGHT DOOR PANEL POLYCARBONATE	1
21	001005^42S01U01S50	RUBBER PROFILE "PIRELA STRAIGHT"	1
22	002454^42S01U01S50	RUBBER PROFILE "SARAZINE SIDE"	1
23	000832	HANDLE	1
24	42S01U01-10-043	RIGHT DOOR STOP HOLDER	1
25	001744	RIGHT INNER DOOR LOCK	1
26	000841	OUTER DOOR LOCK	1
27	42S01U01-50-004	DOOR LOCK COVER LEDGE	1
28	000855	DOOR STOP HOOK	1
29	000854	DOOR STOP PIN	1
30	000857	DOOR STOP WASHER	1
31	000856	DOOR STOP NUT	1
32	0001726	GLASS STOP	1
33	001700	GLASS LOCK	1
34	001476	NUT M10	1
35	42S01U01-50W010	RIGHT MIRROR HOLDER	1

LEFT DOOR TABLE

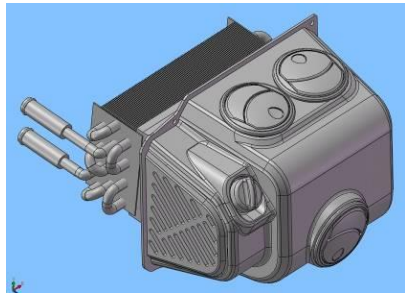
Position	Catalogue no.	Description	Qty
1	001348	PLASTIC NUT COVER OK 10	1
2	001392	SELF-LOCKING NUT M6	1
3	001426	WASHER 6	1
4	001701	SCREW M6x30	9
5	001715	PLASTIC WASHER 6	8
6	001735	RUBBER WASHER 6	8
7	001736	SEAT WASHER 6	9
8	002773	LEFT REAR MIRROR	1
9	42S01U01-50-013	DOOR WINDOW MOVABLE GLASS	1
10	42S01U01-40-009	LEFT DOOR WINDOW FRAME	1
11	001083^42S01U01-50M003	PROFILE AL "U" BETWEEN WINDOWS	1
12	42S01U01-50-012	DOOR WINDOW SOLID POLYCARBONATE	1
13	32S01U02-40W002	LEFT DOOR HINGE	2
14	001308	PLASTIC NUT COVER OK 13 LONG	4
15	001388	SELF-LOCKING NUT M8	4
16	001407	WASHER 8 LARGE	8
17	001411	SCREW M8x30	4
18	001309	PLASTIC NUT COVER OK 13	4
19	42S01U01-40W001	LEFT DOOR FRAME WELDED	1
20	42S01U01-50-001	RIGHT DOOR PANEL POLYCARBONATE	1
21	001005^42S01U01S50	RUBBER PROFILE "PIRELA STRAIGHT"	1
22	002454^42S01U01S50	RUBBER PROFILE "SARAZINE SIDE"	1
23	000832	HANDLE	1
24	42S01U01-10-053	LEFT DOOR STOP HOLDER	1
25	001744	RIGHT INNER DOOR LOCK	1
26	000841	OUTER DOOR LOCK	1
27	42S01U01-50-004	DOOR LOCK COVER LEDGE	1
28	000855	DOOR STOP HOOK	1
29	000854	DOOR STOP PIN	1
30	000857	DOOR STOP WASHER	1
31	000856	DOOR STOP NUT	1
32	0001726	GLASS STOP	1
33	001700	GLASS LOCK	1
34	001476	NUT M10	1
35	42S01U01-40W010	LEFT MIRROR HOLDER	1

ELECTROINSTALLATION – WASHER SYSTEM:

Overall wiring diagram (wiper, washer, heating).



Position	Catalogue no.	Description	Qti
1	002344	HEAT 12V	1
2	000968	SWITCH – WIPER/ WASHER/ OFF	1
3	001576	WASHER MOTOR	1
4	001652	FUSE BOX 2x1	1
5	000885	WASHER TANK	1
6	002764	WIPERMOTOR 12V	1
7	42S01U01-01M001	CABLE HARNESS - WIPER, WASHER, HEATER	1
8	00-01-001	WASHER TANK HOLDER	1
9	42S01U01-02W001	HEATING HOLDEER	1
10	002502	„Y“ COUPLING	1
11	001367	TIGHTENING STRAP	6
12	002386	ELECTRIC VALVE	1
13	002348	SCREW RIVETS	6
14	002391	SWITH - ELECTRIC VENT ON/OFF	1
15	002491	AIR VENT VALVE	1
16	002523	TUBE G1/2“	1
17	002516	TUBE G1/2“+G3/8“	1



Position : 1
Catalogue no.: 002344



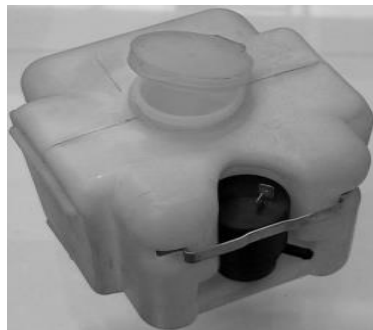
Position : 2
Catalogue no.: 000968



Position : 3
Catalogue no.: 001576



Position : 4
Catalogue no.: 001652



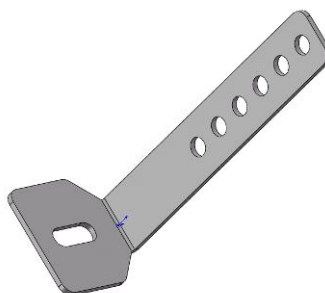
Position : 5
Catalogue no.: 000885



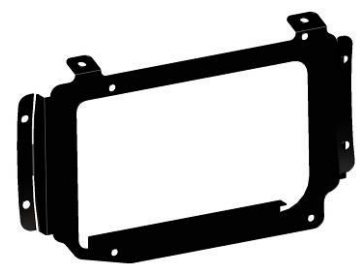
Position : 6
Catalogue no.: 002764



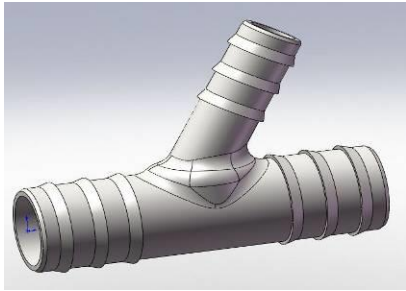
Position : 7
Catalogue no.: 42S01U01-01M001



Position : 8
Catalogue no.: 00-01-001



Position : 9
Catalogue no.:42S01U01-02W001



Position : 10
Catalogue no.: 002505



Position : 11
Catalogue no.: 001367



Position : 12
Catalogue no.: 002386



Position : 13
Catalogue no.: 002348



Position : 14
Catalogue no.: 002391



Position : 15
Catalogue no.: 002491



Position : 16
Catalogue no.: 002523



Position : 17
Catalogue no.: 002516